



## DOCKLANDS, VIC

702/70 Lorimer Street

2  
BED

2  
BATH

2  
CAR



### Marina splendour

This is an apartment not to be missed!

Located on Level 7 in Tower 3 at Yarra's Edge, you are close enough to enjoy all the activity of the Marina and experience the magnificent river and city views.

- Island bench
- Expansive open plan living space
- Bedrooms situated either side of the living space
- Secure parking
- Northern facing aspect
- Spectacular marina views

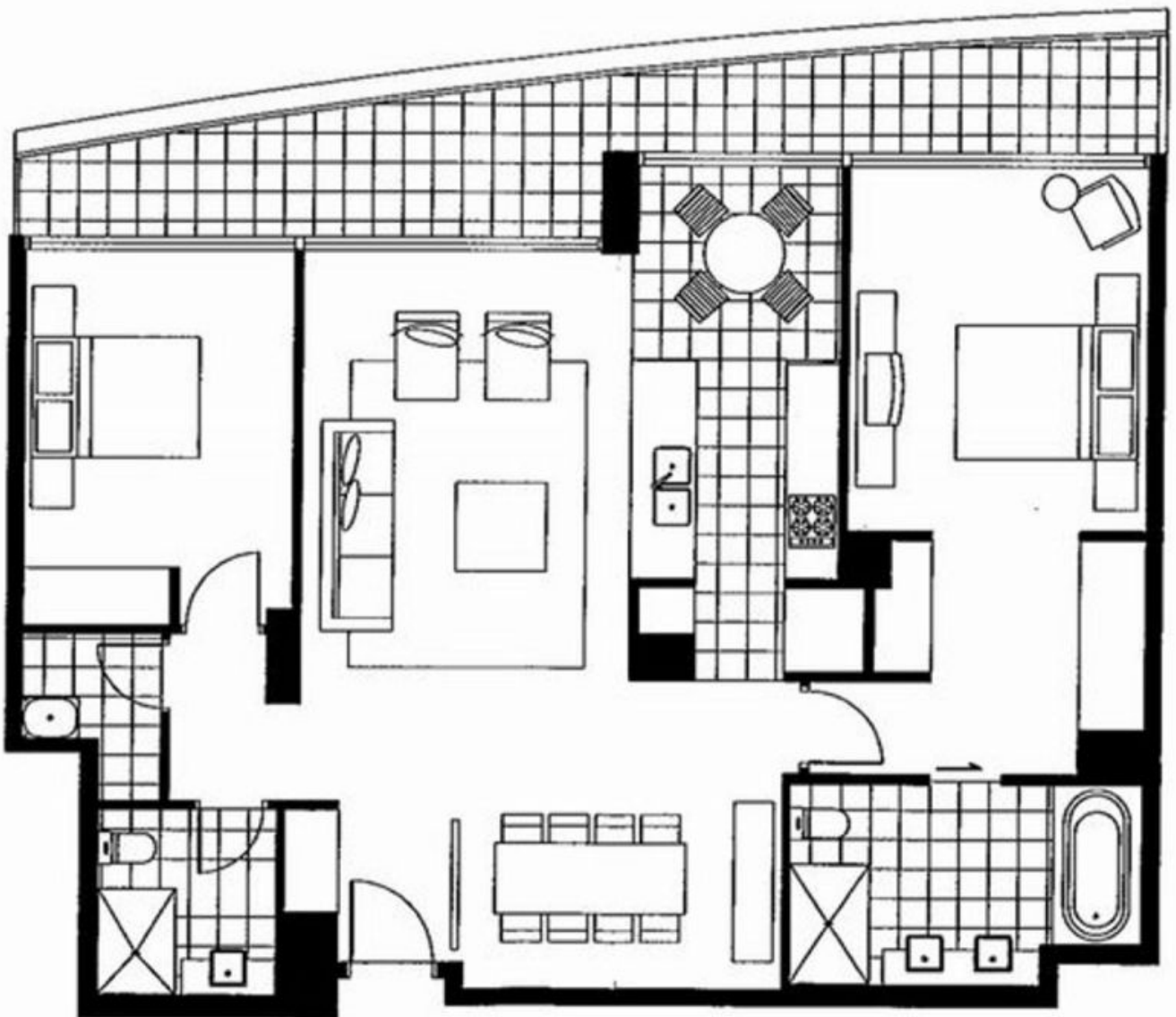
**\$650 per week**

**Contact:** Baden Lucas  
03 9645 1199  
0418 888 751  
Aleisha Clark  
03 9645 1199  
0491 174 507

**Type:** Apartment  
**Date Available:** 10/06/2021  
**Leased Date:** 18/07/2021  
**Bond:** \$2824  
<https://www.resbymirvac.com>

Living 3.7 x 5.8  
Breakfast 2.2 x 2.2  
Dining 2.5 x 3.6

Bedroom 1 3.3 x 4.1 Plus Robe  
Bedroom 2 3.0 x 3.6 Plus Robe



Plans shown are only indicative of layout. Dimensions are approximate.

**DOCKLANDS, VIC**  
702/70 Lorimer Street