



DOCKLANDS, VIC

2305/90 Lorimer Street

2
BED

1
BATH

2
CAR



Stunning apartment on the Yarras Edge

Located in Docklands premier Yarra's Edge precinct, this stunning apartment features a spacious central living area with adjoining balcony, generous host style kitchen with multiple configuration options. Stone topped island bench, stainless-steel Miele appliances, Fisher & Paykel dish drawer and integrated refrigerator. Each bedroom fitted with built in wardrobes and stunning southern views (master also includes access balcony). The oversize bathroom features double basin vanity, separate spa bath and separate shower recess.

This property should be on the top of you list!

Residents may enjoy access to Mirvac's renowned Rek Dek facilities comprising of pool, spa, gym and sauna.

\$600 per week

Contact: Baden Lucas
03 9645 1199
0418 888 751
Aleisha Clark
03 9645 1199
0491 174 507

Type: Apartment

Date Available: 21/05/2021

Leased Date: 04/07/2021

Bond: \$2607

<https://www.resbymirvac.com>

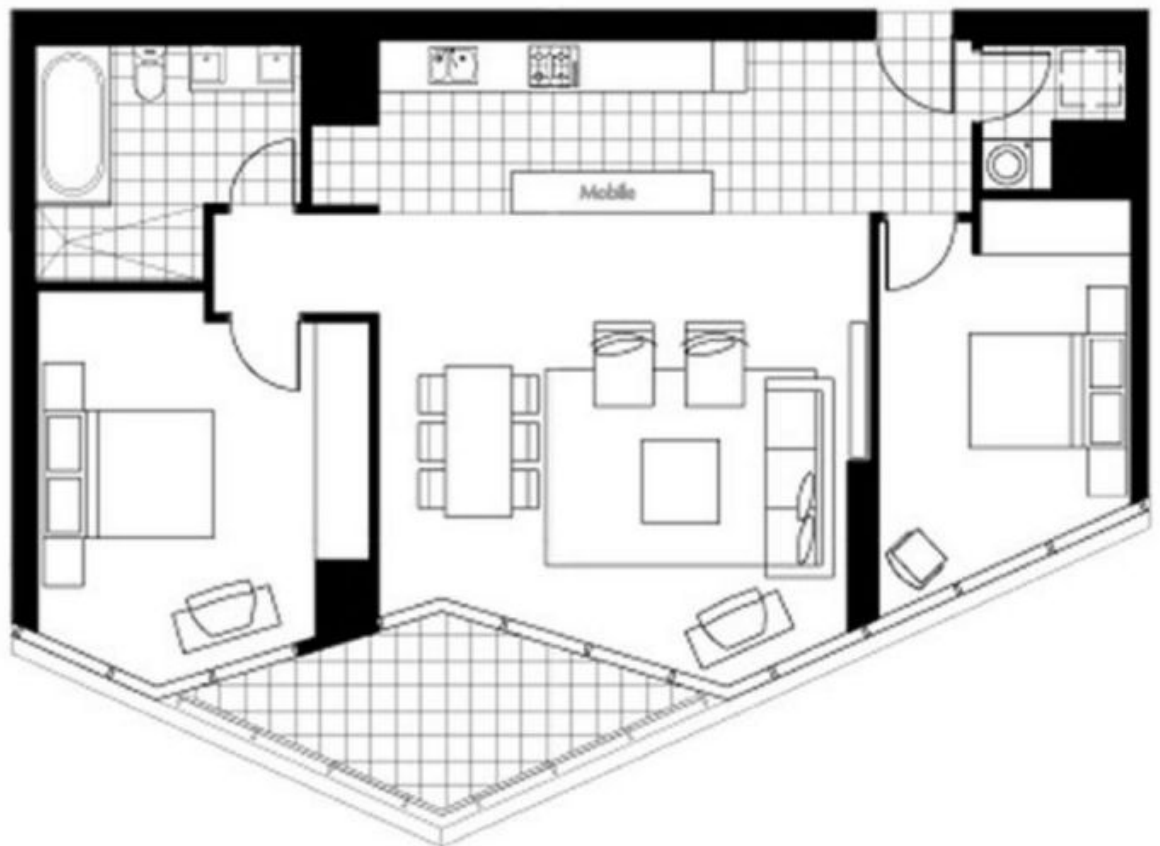
Living
Dining

3.5 x 5.1
2.2 x 4.5

Bedroom 1
Bedroom 2

3.3 x 3.7
3.0 x 3.5

Plus Robe
Plus Robe



Plans shown are only indicative of layout. Dimensions are approximate.

DOCKLANDS, VIC
2305/90 Lorimer Street