



DOCKLANDS, VIC

1607/81 South Wharf Drive

1
BED

1
BATH

1
CAR



Luxury Waterfront Address

Forge is Melbourne's premier waterfront address and this 1-bedroom apartment in the prestigious Yarra's Edge precinct will not disappoint. With expansive glazing, and a closed in balcony create light-filled living environments and sweeping vistas out to Port Phillip Bay.

Boasting 56m2 of living space, the apartment features:

- ? Open plan living and dining with Port Phillip Bay view
- ? Louvered balcony for year-long indoor/outdoor living
- ? Light-filled bedroom with built-in robes
- ? European Stainless-steel appliances, including dishwasher
- ? European laundry
- ? Secure parking for one vehicle

\$390 per week

Contact: Baden Lucas
03 9645 1199
0418 888 751
Aleisha Clark
03 9645 1199
0491 174 507

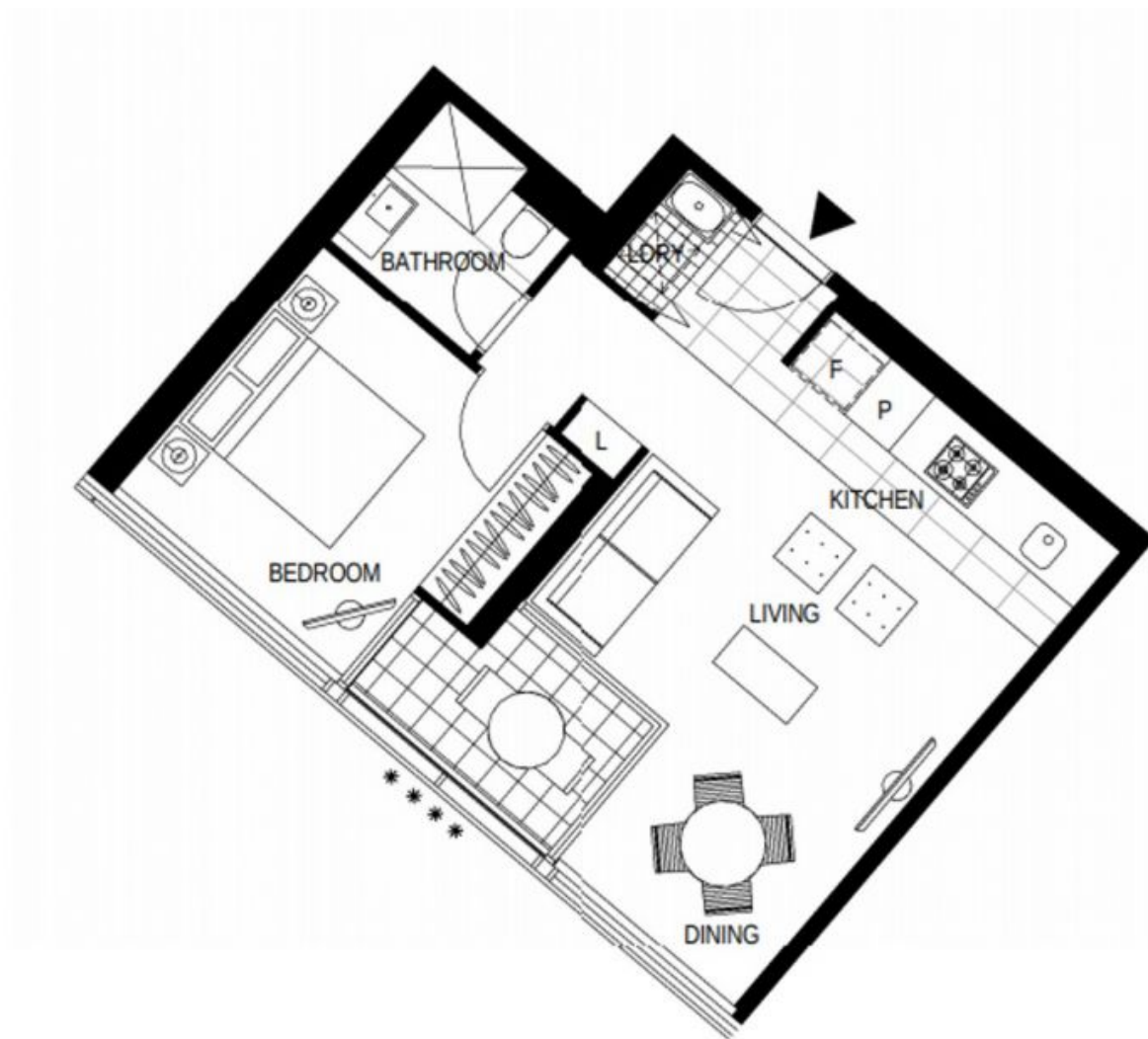
Type: Apartment

Date Available: 07/05/2021

Leased Date: 20/05/2021

Bond: \$1695

<https://www.resbymirvac.com>



LEVEL 8, 9, 10, 11, 12, 13, 14, 15, 16, 17, 18, 19, 20, 21, 22, 23, 24

Plans shown are only indicative of layout. Dimensions are approximate.

DOCKLANDS, VIC
1607/81 South Wharf Drive