



ZETLAND, NSW
706/18 Ebsworth Street

1 BED **1** BATH



Tiled & Spacious, 1-Bedroom Apartment in Green Square, Zetland

This 60sqm, 7th floor apartment features:

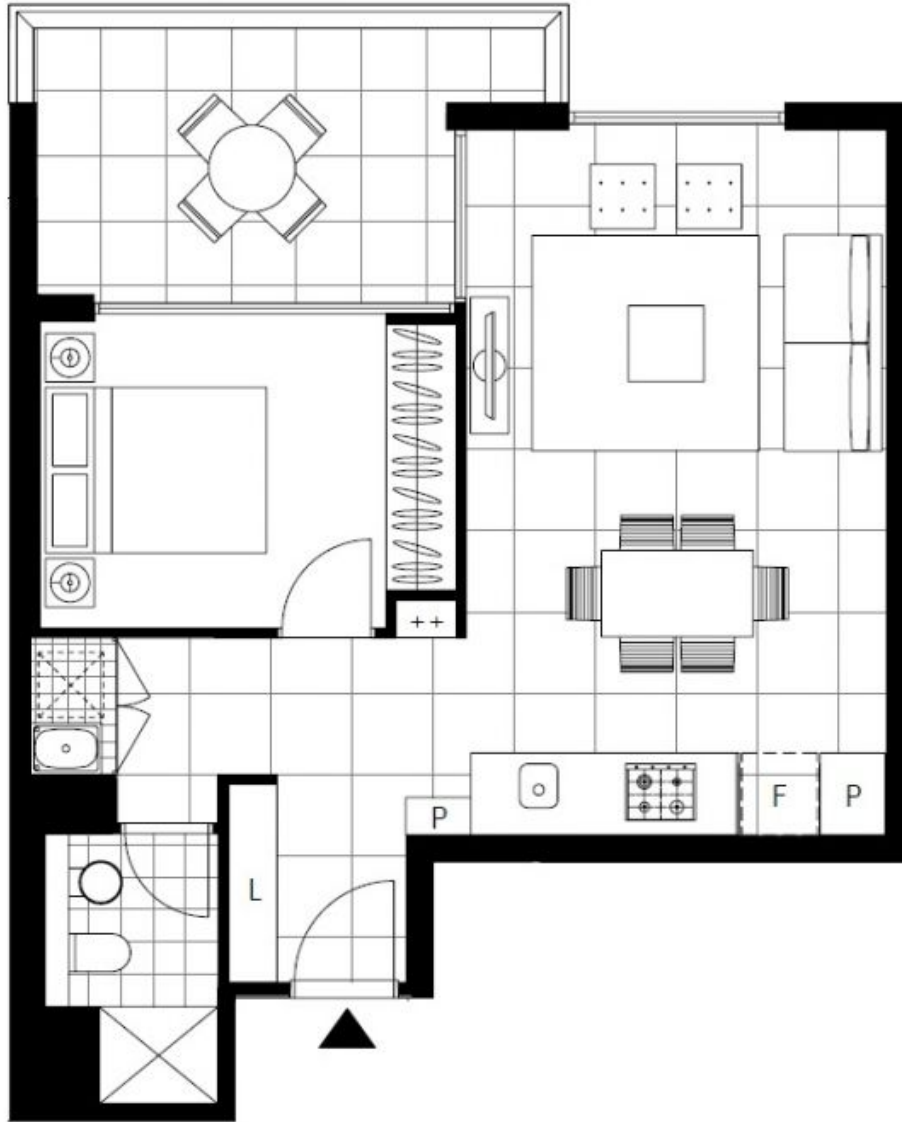
- Large bedroom with floor-to-ceiling built-in wardrobe
- Tiled living and dining area, with access to balcony
- Sleek kitchen with stone benchtop and built-in Smeg appliances
- Modern bathroom with plenty of vanity storage
- Spacious balcony, great for entertaining
- Internal laundry with dryer included
- Secure storage cage included
- Ducted A/C, video intercom and NBN connectivity
- 300m to Woolworths, Green Square Train Station (10mins to the City) and Green Square Library

More apartments available!

Contact: Carmen Whiteley
02 8588 8888
0497 555 519

Type: Apartment
Date Available: 24/04/2021
Bond: \$2000

<https://www.resbymirvac.com>



LEVEL 6, 7, 8

Plans shown are only indicative of layout. Dimensions are approximate.

ZETLAND, NSW
706/18 Ebsworth Street