

ZETLAND, NSW

808/8 Ebsworth Street

2
BED

1
BATH



Modern 2-Bedroom Apartment near Green Square Station!

This 81sqm, 8th floor apartment features:

- Two well-appointed bedrooms with floor-to-ceiling built-in wardrobes
- Functional and spacious living and dining area, with access to balcony
- Sleek kitchen with stone benchtop and built-in Smeg appliances
- Stylish bathroom with plenty of vanity storage
- Internal laundry with dryer included
- Secure storage cage included
- Ducted A/C, video intercom and NBN connectivity
- 300m to Woolworths, Green Square Train Station (10mins to the City) and Green Square Library

More apartments available!

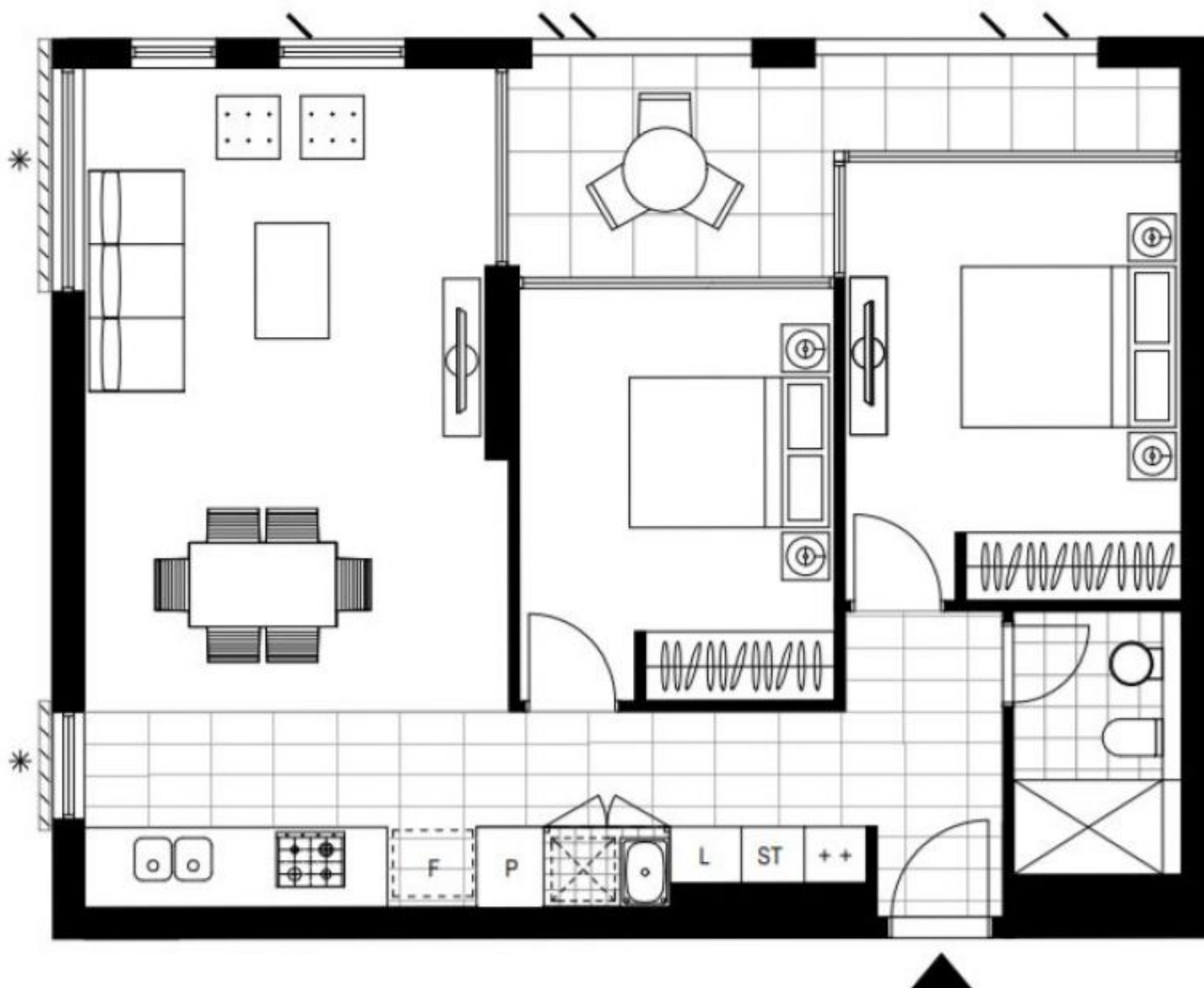
Contact: Carmen Whiteley
02 8588 8888
0497 555 519

Type: Apartment

Date Available: 20/05/2021

Bond: \$2400

<https://www.resbymirvac.com>



Plans shown are only indicative of layout. Dimensions are approximate.

ZETLAND, NSW
808/8 Ebsworth Street