

## SYDNEY OLYMPIC PARK, NSW

22209/2 Figtree Drive

**1**  
BED

**1**  
BATH



### More apartments wanted - Call Christine on 0459 222 085 today!

This 58sqm, 22nd floor apartment features:

- Well-appointed bedroom with generous built-in wardrobe
- Open-plan living and dining area, leading to North facing balcony
- Sleek kitchen with stone benchtops and built-in European appliances
- Functional bathroom with plenty of vanity storage
- Internal laundry with dryer included
- Study nook off bedroom, perfect for a home office
- Secure storage cage included
- Ducted A/C, video intercom and NBN connectivity
- Resident access to gym, BBQ, community room and garden
- 550m to the Olympic Park Train Station, 650m to the Bicentennial Park, 700m to ANZ Stadium

### Apartments Wanted!

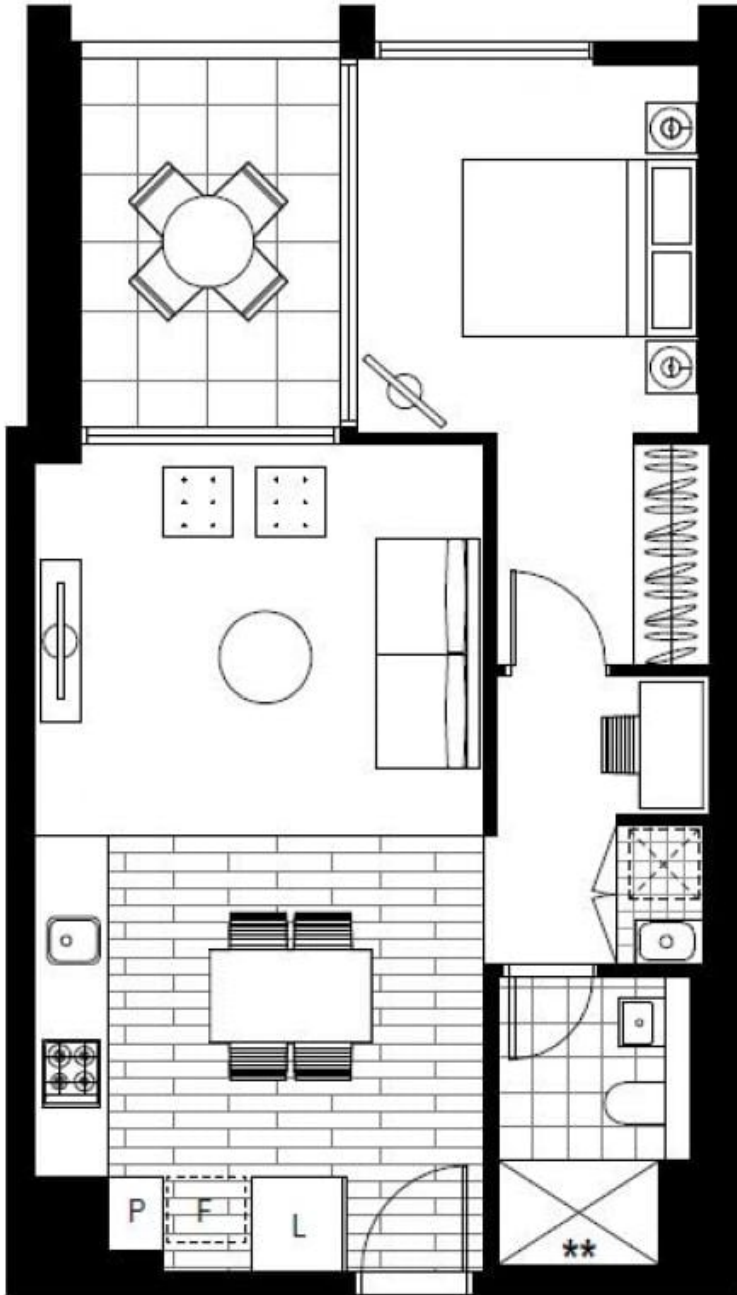
**Contact:** Christine Howison  
02 8588 8888  
0459 222 085

**Type:** Apartment

**Date Available:** 01/05/2021

**Bond:** \$1660

<https://www.resbymirvac.com>



Plans shown are only indicative of layout. Dimensions are approximate.

**SYDNEY OLYMPIC PARK, NSW**  
22209/2 Figtree Drive