



DOCKLANDS, VIC

1606/60 Lorimer Street

1
BED

1
BATH

1
CAR



An unmissable ?Tower 2' apartment that is rare to find

Promising 80 sqm (approx.) of total space which is so rare for 1 bedroom apartment living anywhere in Melbourne, this stunning residence in the ?Tower 2' complex of Yarra's Edge further promises breathtaking bay and Yarra River views plus 2 balconies for outdoor entertaining fun.

? This is a rare Yarra's Edge offering that is perfect for owner-occupiers
 ? Open plan living and dining zone has a wealth of room to move along with the bay and marina vistas

? Main balcony off the living zone is another great vantage point for the amazing views

? There is the rare offering a 2nd balcony which can be enjoyed off the bedroom which boasts BIR storage

? Stylish kitchen boasts a moveable island bench and premium stainless steel appliances

\$540,000 - \$580,000

Contact: Baden Lucas
 03 9645 1199
 0418 888 751
 Baden Lucas
 03 9645 1199
 0418 888 751

Type: Apartment

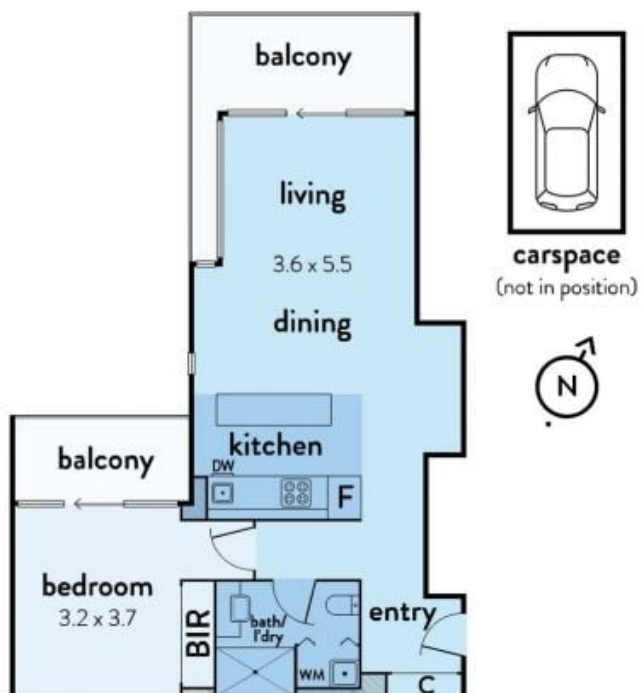
Sold Date: 24/05/2021

<https://www.resbymirvac.com>

1606/60 LORIMER STREET, DOCKLANDS



This floorplan is an artist's impression only, it contains information that we believe to be reliable however we cannot guarantee and accept no responsibility for the accuracy of information supplied. All dimensions are indicative and listed in metres. Interested parties should take their own measurements or engage the services of a licensed surveyor.



Plans shown are only indicative of layout. Dimensions are approximate.

DOCKLANDS, VIC
1606/60 Lorimer Street