



## ZETLAND, NSW

1606/6 Ebsworth Street

2  
BED

2  
BATH

1  
CAR



### Stunning 2-Bedroom Apartment with City Views in Zetland

This 103sqm, 16th floor apartment features:

- Well-appointed bedrooms with floor-to-ceiling built-in wardrobes
- Bright open-plan living and dining area
- Quality kitchen with stone benchtops and built-in Smeg appliances
- Functional bathrooms with plenty of generous storage, bath in ensuite
- North facing balcony, with uninterrupted city views
- Internal laundry with dryer included
- Study nook with built-in desk, perfect for a home office
- Secure car space and storage cage included
- Ducted A/C, video intercom and NBN connectivity
- 300m to Woolworths, Green Square Train Station (10mins to the City) and Green Square Library

### DEPOSIT TAKEN - FIRST INSPECTION!

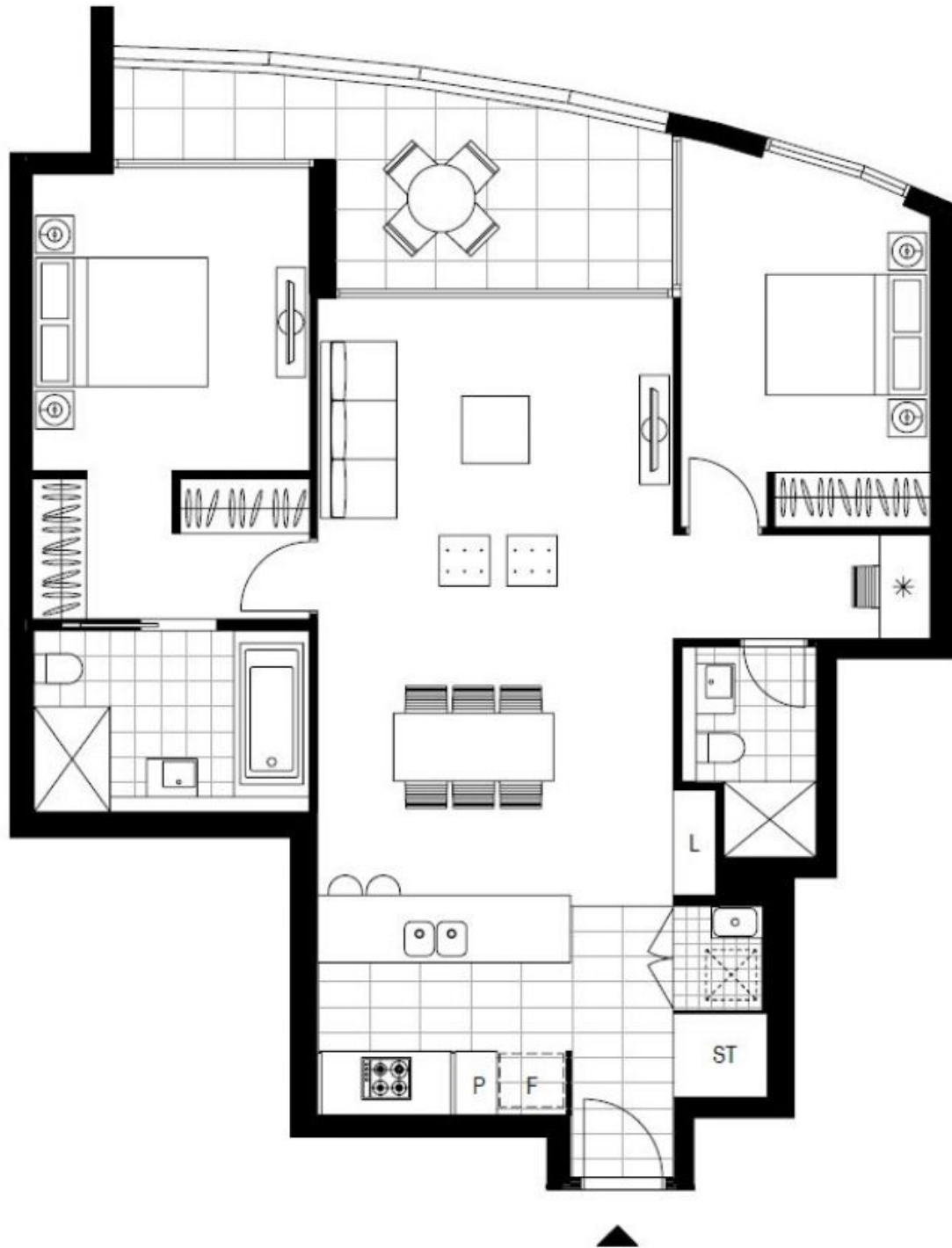
**Contact:** Carmen Whiteley  
02 8588 8888  
0497 555 519

**Type:** Apartment

**Date Available:** 17/03/2021

**Bond:** \$3120

<https://www.resbymirvac.com>



Plans shown are only indicative of layout. Dimensions are approximate.

**ZETLAND, NSW**  
1606/6 Ebsworth Street