

GLEBE, NSW

310/19 Minogue Crescent

2 BED **1** BATH **1** CAR



Deposit taken- More apartments available- Call Harry
0401 545 440

This 86sqm, 3rd floor apartment features:

- Generously appointed bedrooms with built-in wardrobes
- Spacious living and dining area flowing onto balcony
- Sleek kitchen with stone benchtops and built-in Miele appliances
- Functional bathroom with plenty of vanity storage, bath included
- North-East facing balcony, great for entertaining
- Internal laundry with washing machine and dryer included
- Secure car space and storage cage included
- Ducted A/C, video intercom and NBN connectivity
- 450m to the Heritage-listed Tramsheds, light rail and public transport

DEPOSIT TAKEN !

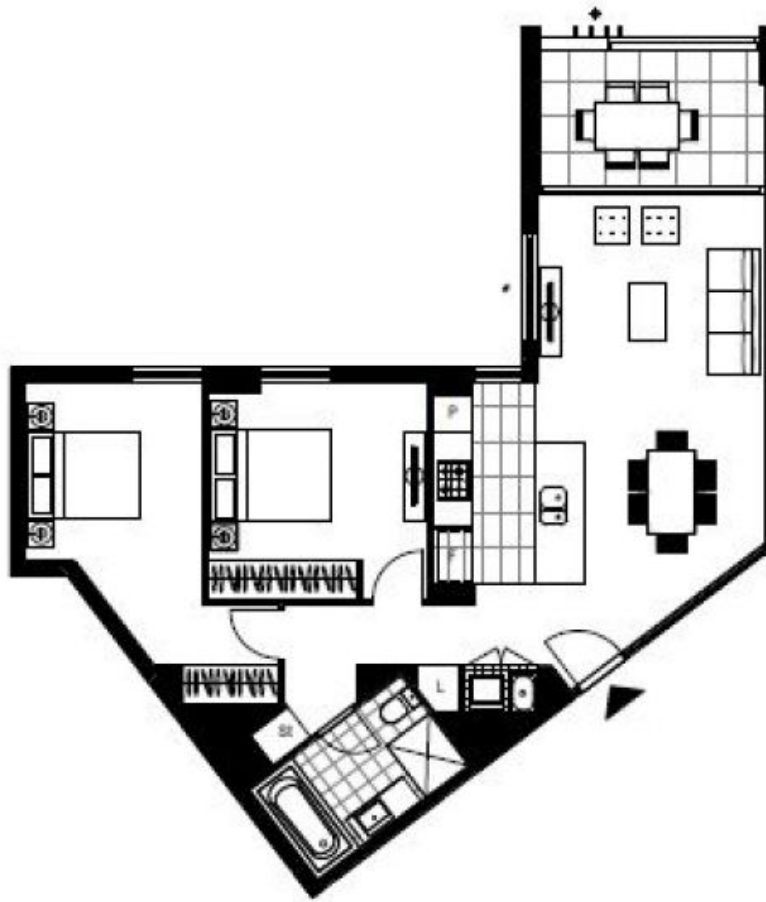
Contact: Naz Sabzpouri
02 8588 8888
0401 545 440

Type: Apartment

Date Available: 03/03/2021

Bond: \$2880

<https://www.resbymirvac.com>



Plans shown are only indicative of layout. Dimensions are approximate.

GLEBE, NSW
310/19 Minogue Crescent