



SYDNEY OLYMPIC PARK, NSW

22501/2 Figtree Drive

1 BED 1 BATH 1 CAR 

Brand-New, 1-Bedroom Apartment with Parking in Sydney Olympic Park

This 64sqm, 25th floor apartment features:

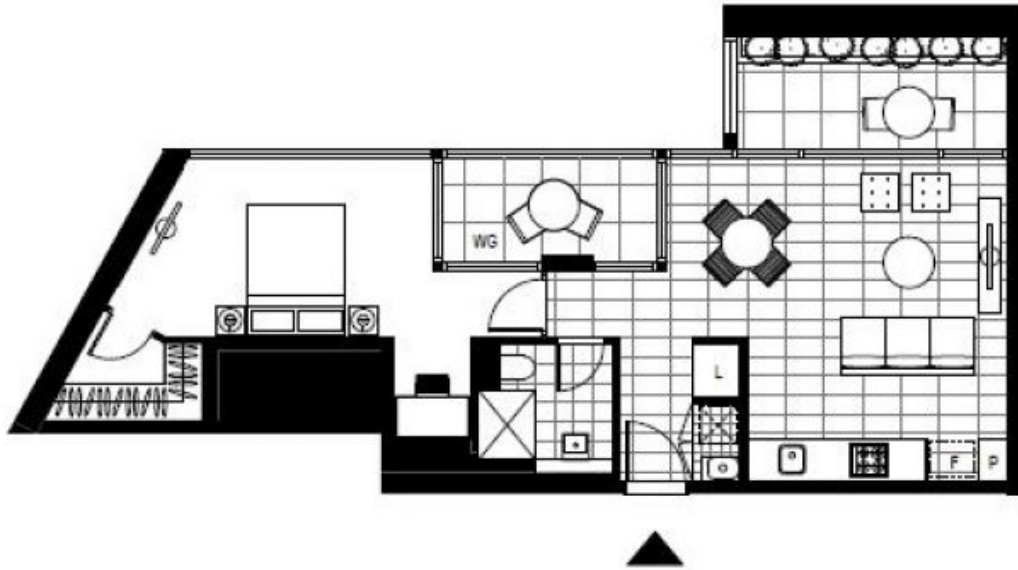
- Oversized bedroom with built-in, walk-in wardrobe
- Tiled living and dining area with stunning district views, great for entertaining
- Sleek kitchen with stone benchtop and built-in European appliances
- Functional bathroom with plenty of vanity storage
- Private balcony and winter garden off living and dining area
- Internal laundry with dryer included
- Secure car space and storage cage included
- Ducted A/C, video intercom and NBN connectivity
- 550m to the Olympic Park Train Station, 650m to the Bicentennial Park, 700m to ANZ Stadium

Deposit Taken | Contact Christine 0459 222 085

Contact: Christine Howison
02 8588 8888
0459 222 085

Type: Apartment
Date Available: 25/03/2021

Bond: \$1800
<https://www.resbymirvac.com>



Plans shown are only indicative of layout. Dimensions are approximate.

SYDNEY OLYMPIC PARK, NSW
22501/2 Figtree Drive