

**ZETLAND, NSW**  
311/28 Ebsworth Street

**2** **2** **1**   
BED BATH CAR

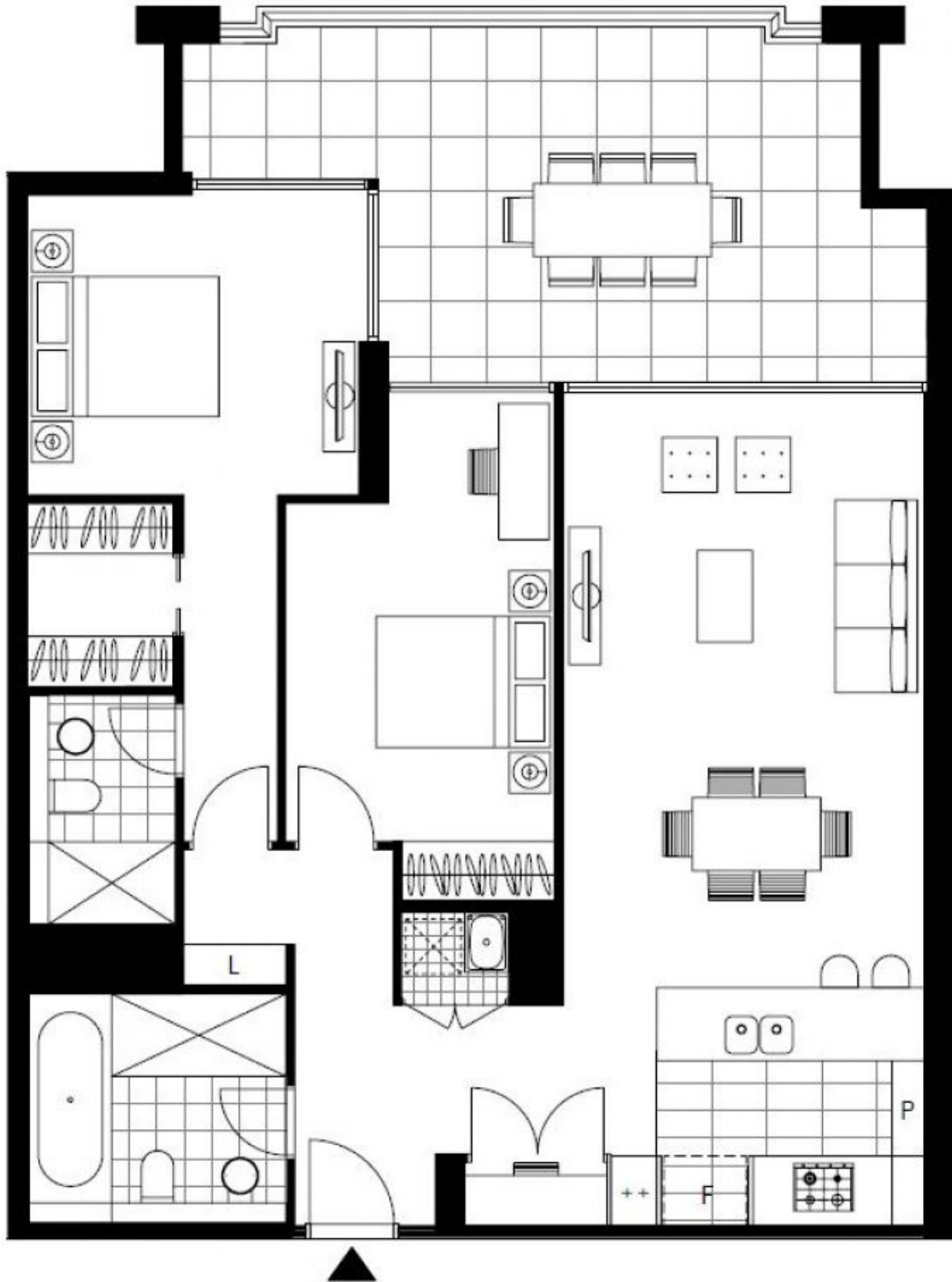
### **Oversized 2-Bedroom Apartment with City Views and Parking**

This 119sqm, 3rd floor apartment features:

- Generously appointed bedrooms with floor-to-ceiling built-in wardrobes
- Functional living and dining area, with access to balcony
- Sleek kitchen with stone benchtops and built-in appliances
- Stylish bathrooms with plenty of vanity storage, bath in main
- North-East facing entertainers' balcony, with city views
- Internal laundry with dryer included
- Study nook at entry, perfect for a home office
- Secure car space and storage cage included
- Ducted A/C, video intercom and NBN connectivity
- 300m to Woolworths, Green Square Train Station (10mins to the City) and Green Square Library

### **DEPOSIT TAKEN - More apartments available!**

**Contact:** Carmen Whiteley  
02 8588 8888  
0497 555 519  
**Type:** Apartment  
**Date Available:** 12/03/2021  
**Bond:** \$3000  
<https://www.resbymirvac.com>



Plans shown are only indicative of layout. Dimensions are approximate.

**ZETLAND, NSW**  
311/28 Ebsworth Street