

GLEBE, NSW

510/19 Minogue Crescent

2 BED **1** BATH **1** CAR 

Contemporary 2-Bedroom Apartment with Parking in Harold Park

This 86sqm, 5th floor apartment features:

- Generously appointed bedrooms with built-in wardrobes
- Spacious living and dining area flowing onto balcony
- Sleek kitchen with stone benchtops and built-in Miele appliances
- Functional bathroom with plenty of vanity storage, bath included
- North-East facing balcony, great for entertaining
- Internal laundry with a dryer included
- Secure car space and storage cage included
- Ducted A/C, video intercom and NBN connectivity
- 450m to the Heritage-listed Tramsheds, light rail and public transport

\$750 per week

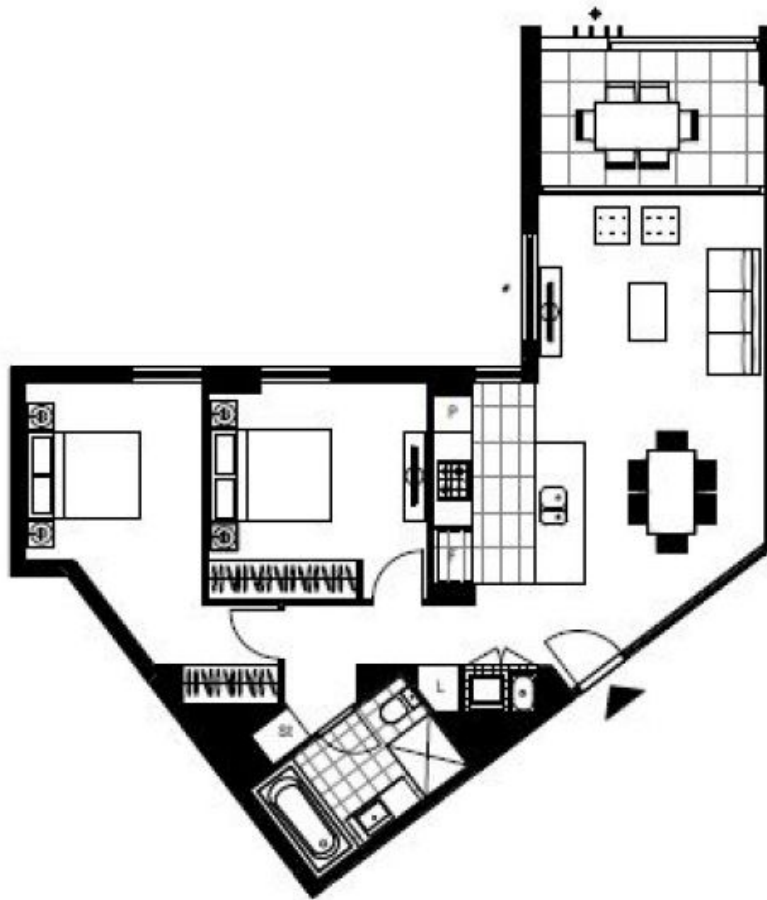
Contact: Naz Sabzpouri
02 8588 8888
0401 545 440

Type: Apartment

Date Available: 24/02/2021

Bond: \$3000

<https://www.resbymirvac.com>



Plans shown are only indicative of layout. Dimensions are approximate.

GLEBE, NSW
510/19 Minogue Crescent