

SYDNEY OLYMPIC PARK, NSW

20706/2 Figtree Drive

1
BED

1
BATH

1
CAR



1-Bedroom Apartment with Seperate Study Room and Parking!

This North-facing, 73sqm apartment features:

- Oversized bedroom with generous built-in wardrobe
- Separate study room, perfect for a home office or nursery
- Functional living and dining area, with access to balcony
- Quality kitchen with stone benchtops and built-in European appliances
- Sleek bathroom with plenty of vanity storage
- Internal laundry with dryer included
- Secure car space and storage cage included
- Ducted A/C, video intercom and NBN connectivity
- 550m to the Olympic Park Train Station, 650m to the Bicentennial Park, 700m to ANZ Stadium

Deposit Taken | Contact Christine 0459 222 085

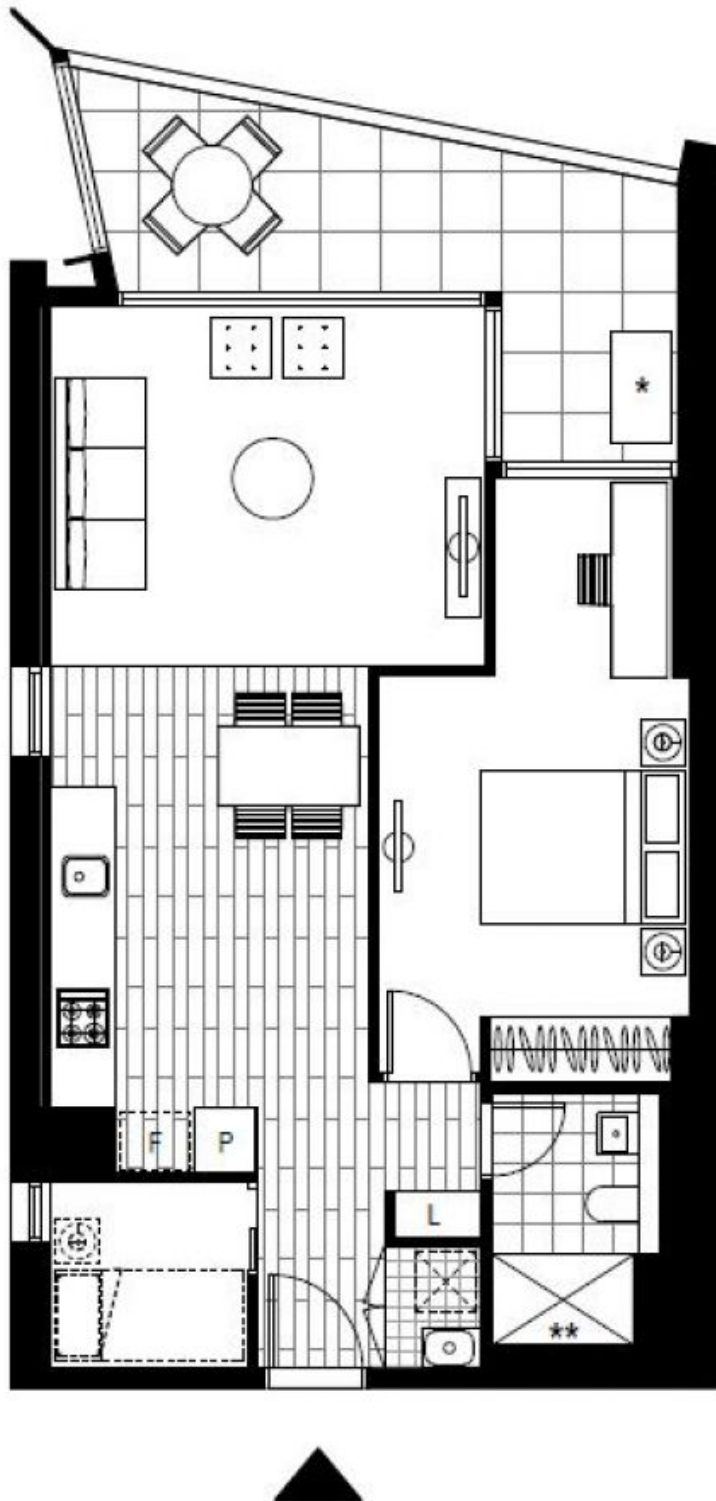
Contact: Christine Howison
02 8588 8888
0459 222 085

Type: Apartment

Date Available: 18/02/2021

Bond: \$2000

<https://www.resbymirvac.com>



Plans shown are only indicative of layout. Dimensions are approximate.

SYDNEY OLYMPIC PARK, NSW
20706/2 Figtree Drive