



**ST LEONARDS, NSW**  
1009/486 Pacific Highway

**2** BED **2** BATH **1** CAR 

**Stunning 2-Bedroom Apartment with Parking in St Leonards**

This Level 10, North-facing apartment features:

- Spacious bedrooms with floor-to-ceiling built-in wardrobes
- Open-plan living and dining area, with access to balcony
- Modern kitchen with stone benchtops and built-in European appliances
- Sleek bathrooms with plenty of vanity storage, ensuite off main bedroom
- Internal laundry with dryer included
- Secure car space and storage cage included
- Ducted A/C, video intercom and NBN connectivity
- Resident access to the pool, spa, sauna, steam room, cinema room and outdoor terrace
- Onsite fitness centre and concierge facility

**Deposit Taken | Contact Christine 0459 222 085**

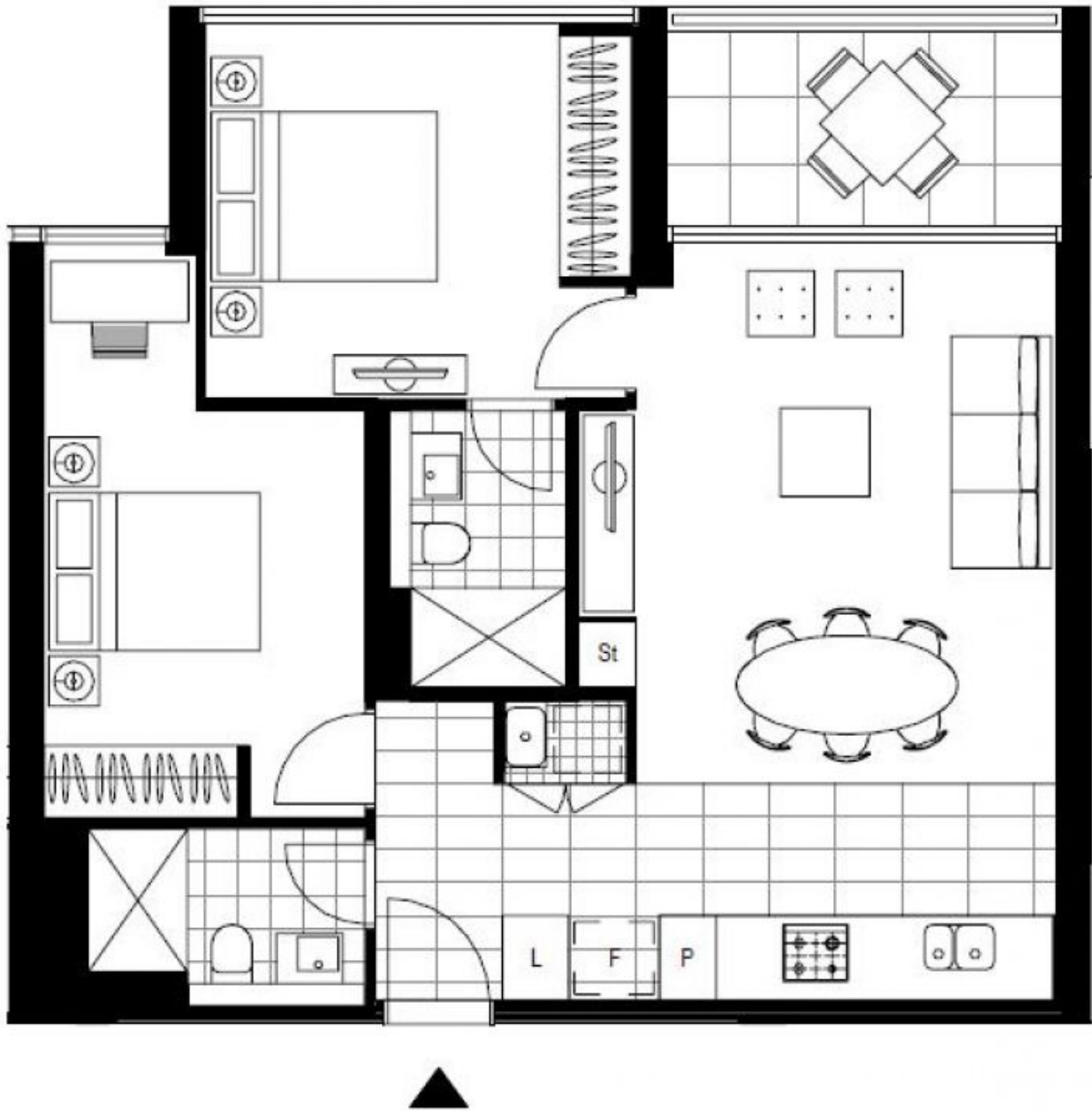
**Contact:** Christine Howison  
02 8588 8888  
0459 222 085

**Type:** Apartment

**Date Available:** 03/03/2021

**Bond:** \$3000

<https://www.resbymirvac.com>



Plans shown are only indicative of layout. Dimensions are approximate.

**ST LEONARDS, NSW**  
1009/486 Pacific Highway