

ZETLAND, NSW

1003/6 Ebsworth Street

1
BED

1
BATH



Stunning & Modern, 1-Bedroom Apartment in Green Square

This 61sqm, 10th floor Apartment features:

- Large bedroom with generous built-in wardrobe
- Open-plan living and dining area, leading to balcony with partial city views
- Modern kitchen with island stone benchtop and Smeg appliances
- Sleek bathroom with plenty of storage
- Internal laundry with dryer included
- Secure storage cage included
- Ducted A/C, video intercom and NBN connectivity
- 300m to Woolworths, The Social Corner and Green Square Train Station (10mins to the City)

DEPOSIT TAKEN - More apartments available!

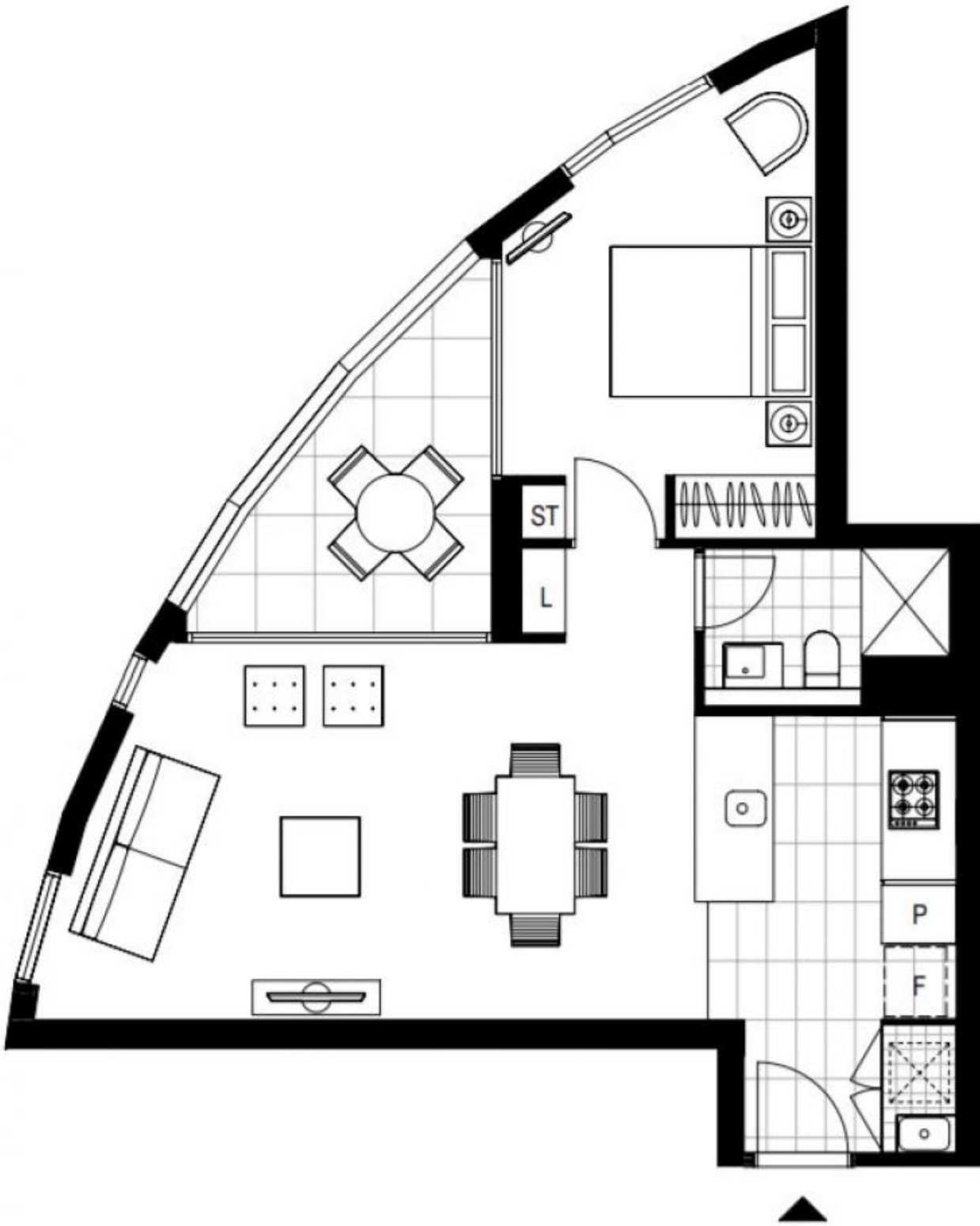
Contact: Carmen Whiteley
02 8588 8888
0497 555 519

Type: Apartment

Date Available: 27/01/2021

Bond: \$2200

<https://www.resbymirvac.com>



Plans shown are only indicative of layout. Dimensions are approximate.

ZETLAND, NSW
1003/6 Ebsworth Street