

BONDI, NSW
6601/32 Wellington Street

1
BED

1
BATH



Stunning 1-Bedroom Apartment with Ocean Views in Bondi

This 50sqm, 6th floor Apartment features:

- Well-appointed bedroom with generous built-in wardrobe
- Open-plan, tiled living and dining area with TV/unit included
- Modern kitchen with stone benchtop and Miele appliances
- Refrigerator included
- Sleek bathroom with plenty of storage
- East-facing balcony with ocean views
- Internal laundry with washing machine and dryer included
- Secure storage cage included
- Ducted A/C, video intercom and NBN connectivity
- Onsite building management, resident access to community garden with BBQ area

DEPOSIT TAKEN - FIRST INSPECTION!

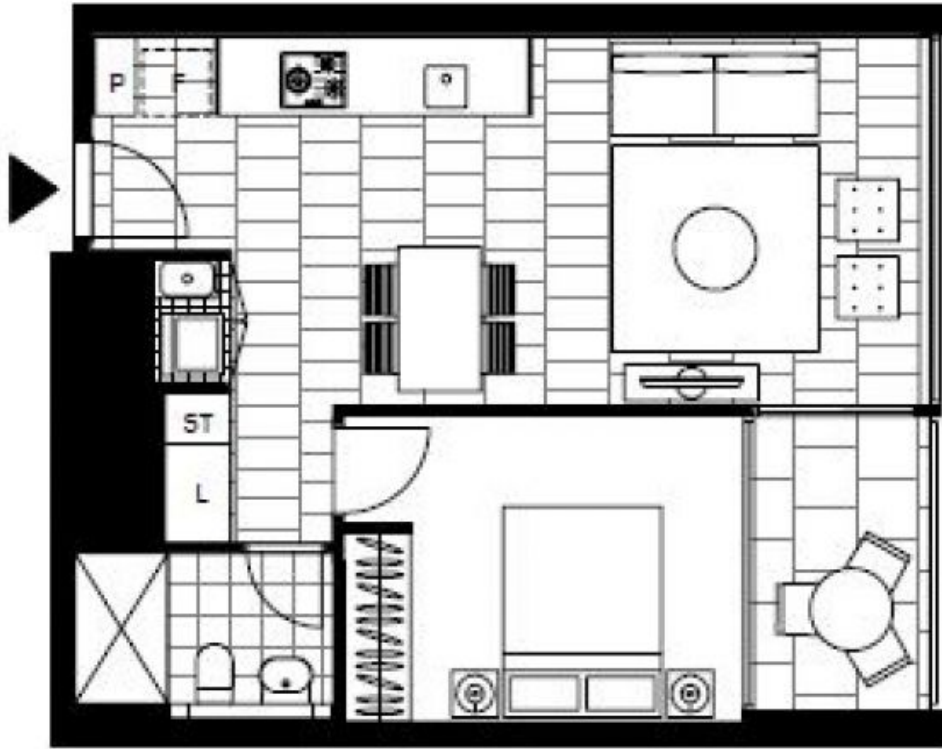
Contact: Carmen Whiteley
02 8588 8888
0497 555 519

Type: Apartment

Date Available: 03/02/2021

Bond: \$2880

<https://www.resbymirvac.com>



Plans shown are only indicative of layout. Dimensions are approximate.

BONDI, NSW
6601/32 Wellington Street