



GLEBE, NSW
202/170 Ross Street

2 BED **2** BATH **1** CAR



Large 2-Bedroom Apartment in Harold Park

This 104sqm, 2nd floor Apartment features:

- Spacious bedrooms with generous built-in wardrobes
- Open-plan living and dining area, leading to the balcony
- Modern kitchen with stone benchtops and Miele appliances
- Ultramodern bathrooms with plenty of storage, bath in ensuite
- North East-facing balcony, perfect for entertaining
- Internal laundry with washer and dryer included
- Study nook at entry, perfect for a home office
- Secure car space and storage cage included
- Ducted A/C, video intercom and NBN connectivity
- 220m to the Heritage-listed Tramsheds, light rail station and public transport

\$780 per week | North Facing

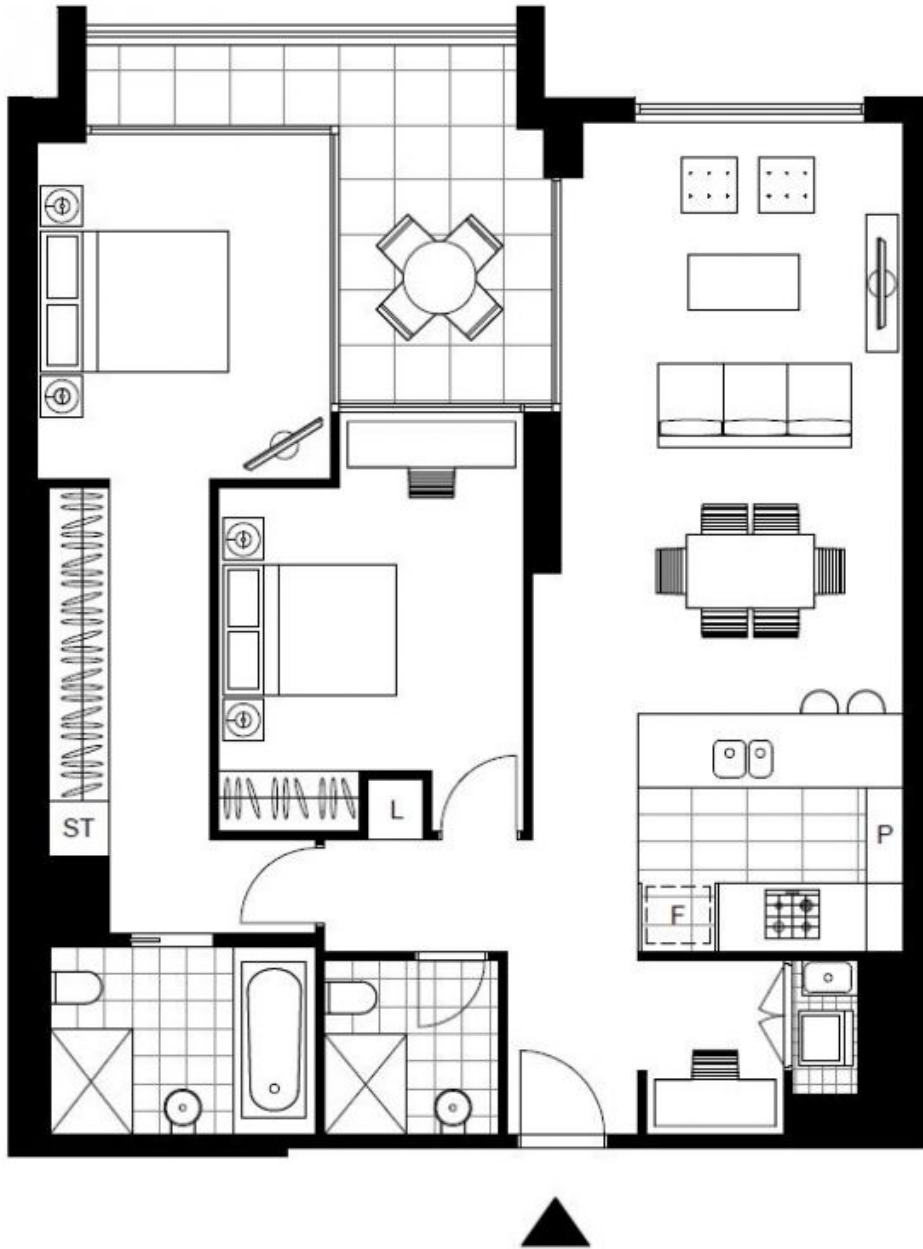
Contact: Naz Sabzpour
02 8588 8888
0401 545 440

Type: Apartment

Date Available: 05/02/2021

Bond: \$3120

<https://www.resbymirvac.com>



Plans shown are only indicative of layout. Dimensions are approximate.

GLEBE, NSW
202/170 Ross Street