

PAVILIONS
RESIDENCES
by mirvac

Deposit Taken

Other Apartments Available

Call the leasing hotline 0459 222 085 or email enquiries@resbymirvac.com



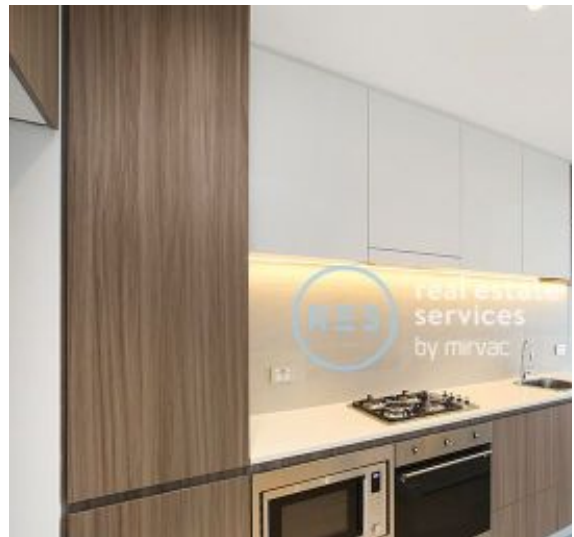
PAVILIONS
RESIDENCES
by mirvac

For Lease

1 Bed | 1 Bath | 1 Car

\$450pw

Call the leasing hotline 0459 222 085



SYDNEY OLYMPIC PARK, NSW

21209/2 Figtree Drive

1
BED

1
BATH

1
CAR



1-Bedroom Apartment with Parking in Sydney Olympic Park!

This 58sqm, Level 12 Apartment features:

- Spacious bedroom with generous built-in wardrobe
- Open-plan living and dining area, leading to the balcony
- Contemporary kitchen with stone benchtop and built-in appliances
- Sleek bathroom with generous vanity storage
- Sunny North-East facing balcony, perfect for entertaining
- Internal laundry with dryer included
- Secure parking and storage cage included
- Ducted A/C, video intercom and NBN connectivity
- Resident access to gym, community room and open BBQ area
- 550m to the Olympic Park Train Station, 650m to the Bicentennial Park, 700m to ANZ Stadium

Deposit Taken

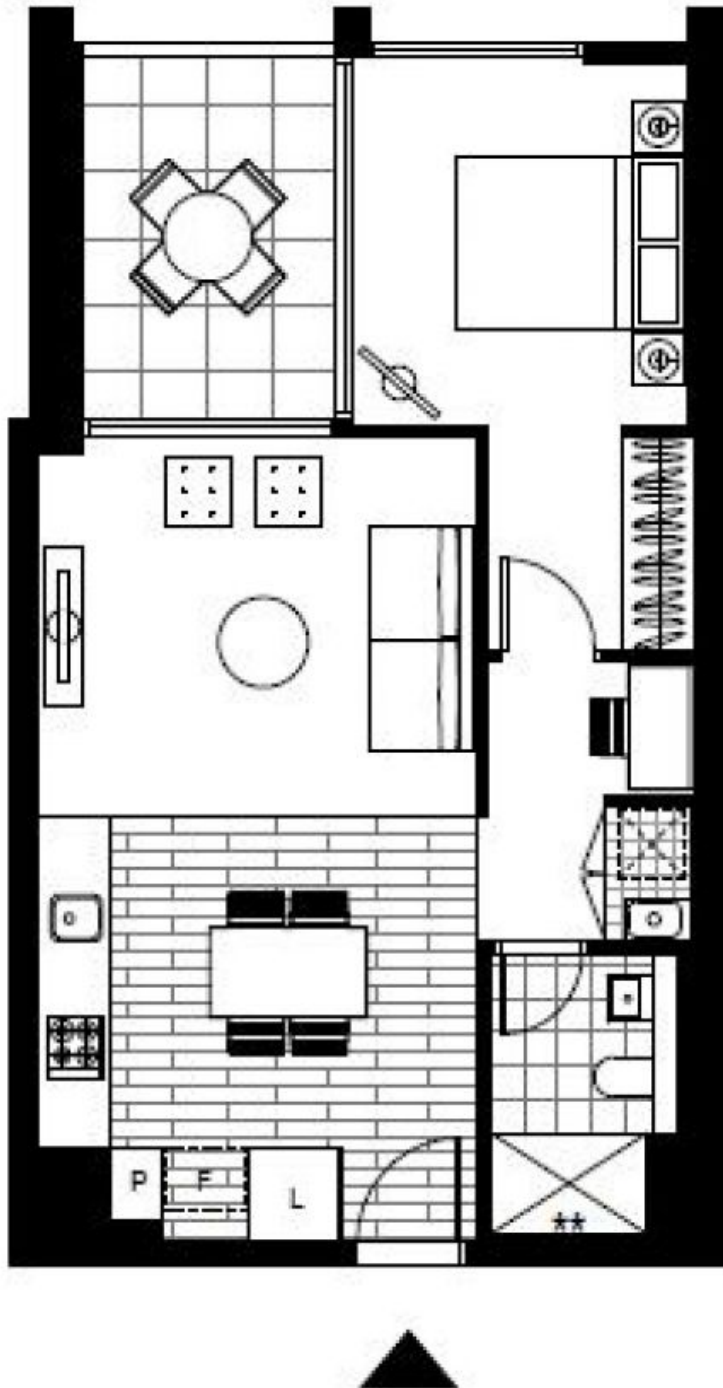
Contact: Christine Howison
02 8588 8888
0459 222 085

Type: Apartment

Date Available: 01/02/2021

Bond: \$1800

<https://www.resbymirvac.com>



Plans shown are only indicative of layout. Dimensions are approximate.

SYDNEY OLYMPIC PARK, NSW
21209/2 Figtree Drive