

PAVILIONS  
RESIDENCES  
by mirvac

# Deposit Taken

## Other Apartments Available

Call the leasing hotline 0459 222 085 or email [enquiries@resbymirvac.com](mailto:enquiries@resbymirvac.com)



### SYDNEY OLYMPIC PARK, NSW

10703/2 Figtree Drive

1  
BED

1  
BATH



#### Near-New, North Facing 1-Bedroom Apartment in 'Pavilions', Sydney Olympic Park

This 59sqm, 1-Bedroom Apartment features:

- Spacious bedroom with generous built-in wardrobe
- Open-plan living and dining area, leading to the balcony
- Contemporary kitchen with stone benchtop and Smeg appliances
- Sleek bathroom with generous vanity storage
- Sunny North-West facing balcony, great for entertaining
- Internal laundry with dryer included
- Study nook included, perfect for a home office
- Storage cage included
- Ducted A/C, video intercom and NBN connectivity
- 550m to the Olympic Park Train Station, 650m to the Bicentennial Park, 700m to ANZ Stadium

#### Deposit Taken - Others Available

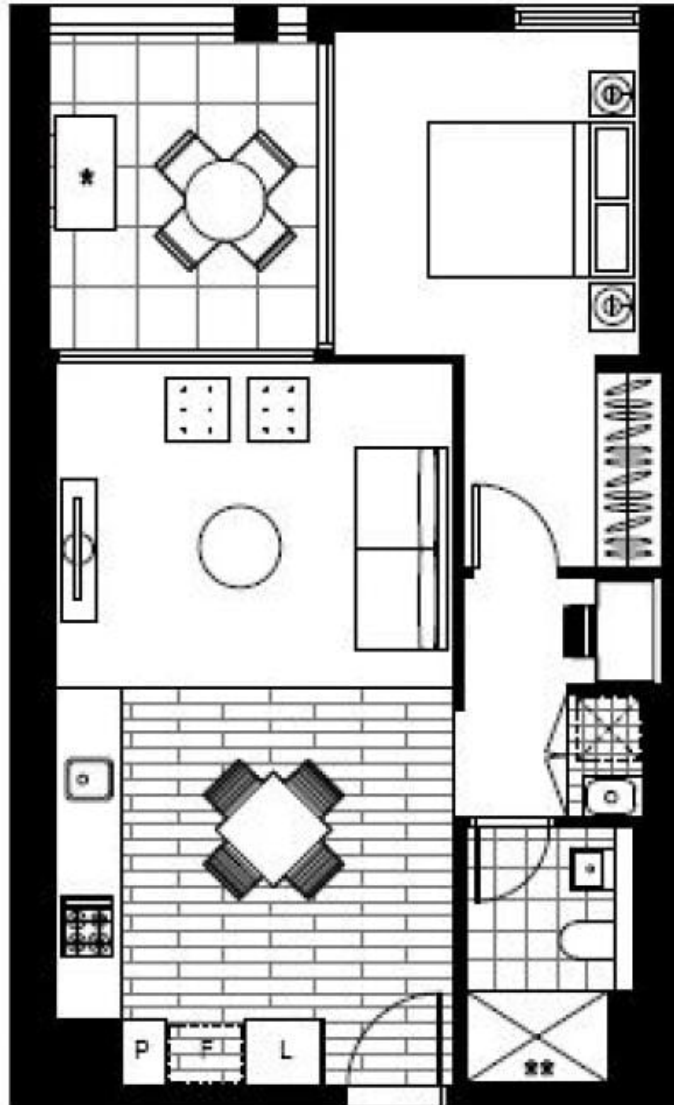
**Contact:** Christine Howison  
02 8588 8888  
0459 222 085

**Type:** Apartment

**Date Available:** 04/01/2021

**Bond:** \$1680

<https://www.resbymirvac.com>



Plans shown are only indicative of layout. Dimensions are approximate.

**SYDNEY OLYMPIC PARK, NSW**  
10703/2 Figtree Drive