



DOCKLANDS, VIC
1608/60 Lorimer Street

1 BED **1** BATH **1** CAR



Stunning bay views with this large one bedroom apartment in exclusive Yarra's Edge

This amazing one bedroom apartment is situated on the 16th floor of the much sought after 2nd tower of Yarra's Edge, has the most amazing views that inspecting is a must.

The property boasts the following features:

One large bedroom sunlight with built in robes.

Spacious gourmet kitchen with stainless steel appliances and stone bench tops adjoins the open plan living room

Nice outdoor balcony perfect for entertaining or just relaxing.

\$400 per week

Contact: Baden Lucas
03 9645 1199
0418 888 751

Type: Apartment

Date Available: 09/12/2020

Leased Date: 25/01/2021

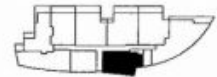
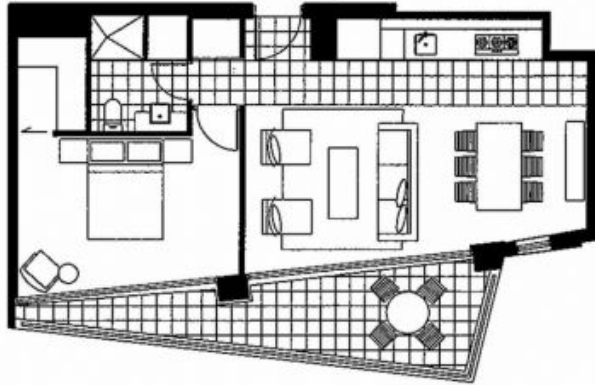
Bond: \$2400

<https://www.resbymirvac.com>

Living 4.0 x 4.1
Dining 2.9 x 3.7

Bedroom 1 3.0 x 4.5 Plus Robe

Please note that this floor plan is a guide only.
The information contained herein is not guaranteed.
Dimensions are approximate. Prospect purchasers
must rely on their own enquiries.



Plans shown are only indicative of layout. Dimensions are approximate.

DOCKLANDS, VIC
1608/60 Lorimer Street