



DEPOSIT TAKEN

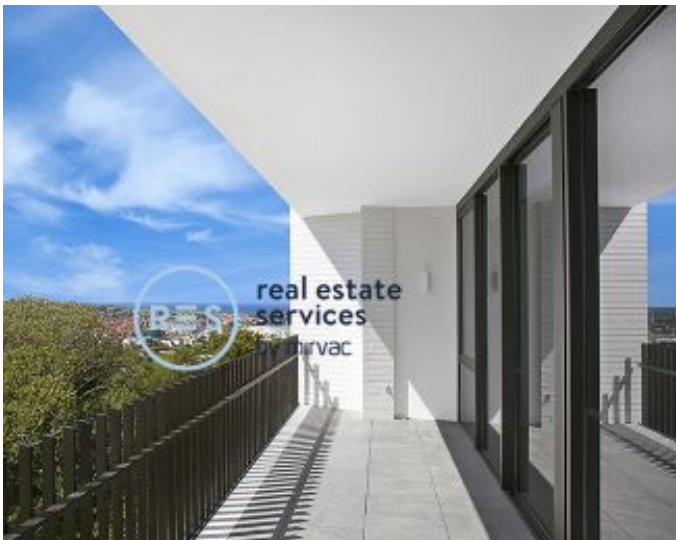
# FIRST INSPECTION!

If you are interested in leasing an apartment in The Moreton or would like to rent your apartment out, call our leasing hotline 0497 555 519 today!

[www.resbymirvac.com](http://www.resbymirvac.com)



**THE MORETON**  
BONDI



**BONDI, NSW**  
5609/34 Wellington Street

**1** BED **1** BATH **1** CAR 

## Garden Facing 1-Bedroom Apartment with Parking in 'The Moreton', Bondi

This 68sqm, 6th floor Apartment features:

- Large bedroom with generous built-in wardrobe
- Tiled open-plan living and dining area
- Modern kitchen with stone benchtop and Miele appliances
- Stylish bathroom with plenty of storage
- North-facing balcony, overlooking the internal gardens
- Internal laundry with dryer included
- Study nook off bedroom, perfect for a home office
- Secure car space included
- Ducted A/C, video intercom and NBN connectivity
- 1.5km walk to the iconic Bondi Beach, 300m to public transport

## DEPOSIT TAKEN - FIRST INSPECTION!

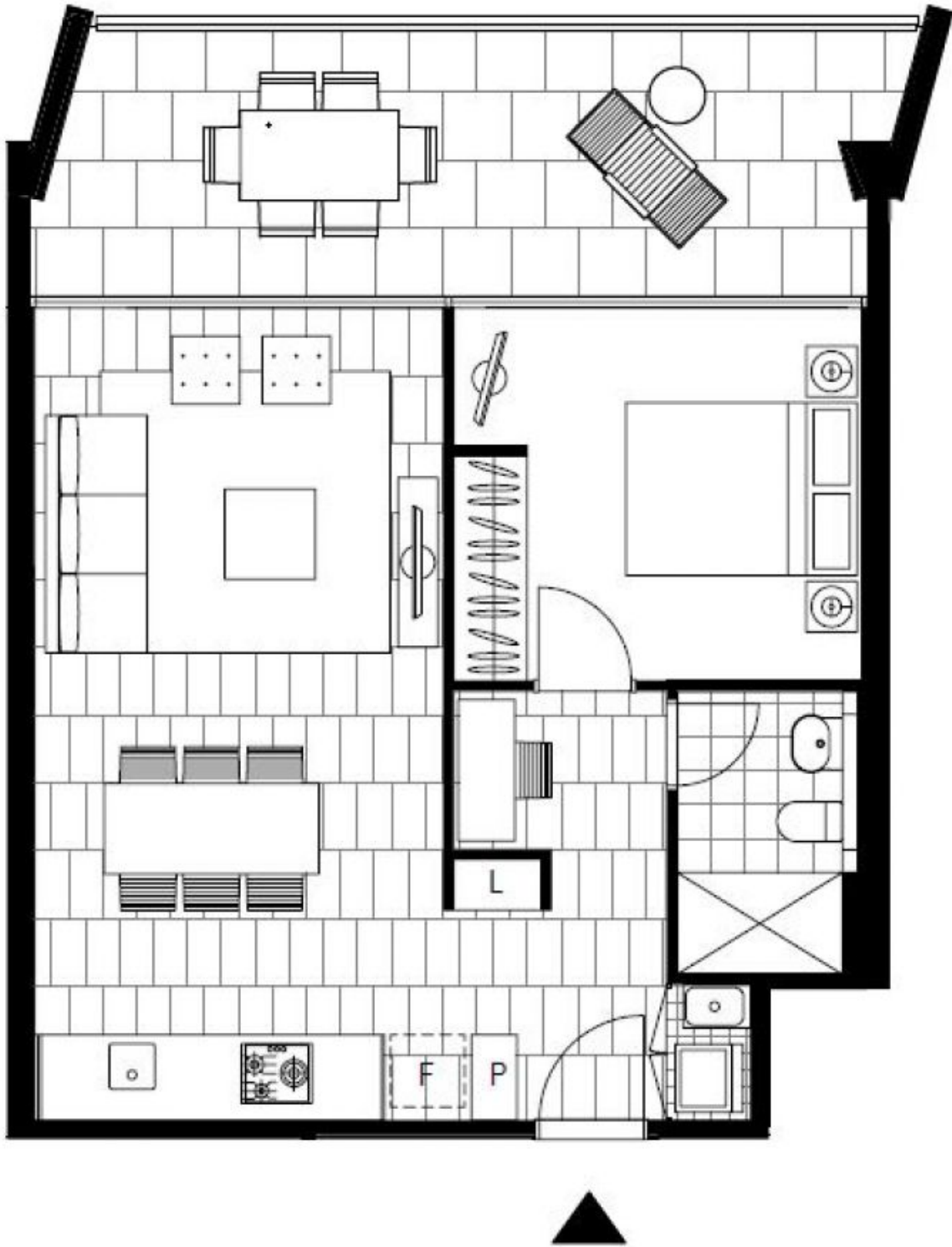
**Contact:** Carmen Whiteley  
02 8588 8888  
0497 555 519

**Type:** Apartment

**Date Available:** 19/12/2020

**Bond:** \$3160

<https://www.resbymirvac.com>



Plans shown are only indicative of layout. Dimensions are approximate.

**BONDI, NSW**  
5609/34 Wellington Street