



DONCASTER, VIC

311/65 Stables Circuit

2 **1** **1** **RES**
BED BATH CAR

Stunning 2-bedroom apartment

This Phoenix apartment is set to elevate the lifestyle of its tenant. With lush parklands at its doorstep; where style, privacy and timeless design blends with nature, beauty and freedom. Unique, exclusive and limited, this is a lifestyle of distinction.

Apartment features:

- ? Bespoke design, quality construction and finishes
- ? Large internal space of 72m²
- ? Balcony ? 10m²
- ? Car space
- ? BIRs
- ? Stainless steel Miele appliances and integrated dishwasher
- ? Generous cupboard space

\$440 per week

Contact: Baden Lucas
03 9645 1199
0418 888 751

Type: Apartment

Date Available: 20/11/2020

Leased Date: 27/01/2021

Bond: \$2640

<https://www.resbymirvac.com>

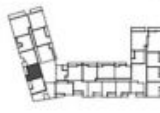


LEVEL 03



APT 3.11

LOCATION PLAN



DONCASTER ROAD

APARTMENT TYPE
2 BED, 1 BATH

INTERNAL AREA 72 m²
BALCONY AREA 10 m²
TOTAL AREA 82 m²

Areas subject to final survey, area includes
balcony and/or terrace where applicable. 0
mechanic parking and external storage areas.



IMPORTANT NOTICE
Please note that this floor plan was prepared prior to Construction. Changes will undoubtedly be made during development and subject to change without notice in accordance with the provisions of the contract for sale. This information is provided for your information only and does not constitute an offer of any financial product. It is intended to provide a general overview of the proposed development and is not intended to be used as a basis for investment decisions. All graphics, including the layout, landscaping, planning, services and other shading devices, are intended as a guide only and are not to be relied on as an implementation of the final product.

PROPERTY #1
A APARTMENT UNIT

CONTACT NUMBER
03 9463 3400
APARTMENTS OF TULLAMORE RESIDENTIAL
sales@apartmentsoftullamore.com



Plans shown are only indicative of layout. Dimensions are approximate.

DONCASTER, VIC
311/65 Stables Circuit