



DOCKLANDS, VIC

1208/60 Lorimer Street

1
BED

1
BATH

1
CAR



Find Your First Home in the Coveted Yarra's Edge Precinct

This fantastic apartment is located on the 12th floor of the most sought after Yarra's Edge precinct of Docklands and offers the most amazing views over South Melbourne onto Port Melbourne, St Kilda and of course the glistening Bay

A bright and spacious apartment with floor to ceiling windows, this apartment consists of a spacious bedroom with walk-in robe, an open plan dining and living room opening onto a wide balcony. The hostess kitchen has stone bench-tops, stainless steel appliances and dishwasher. Other features include a contemporary bathroom with a European style laundry, ducted air-conditioning/heating and a secure undercover car space. The developments health style facilities including heated indoor pool, gymnasium, spa and sauna are all available to residents. Restaurants, cafes, shopping and vibrant bars are all at your front door for your convenience.

\$450,000

- \$480,000

Contact:

Baden Lucas

03 9645 1199

0418 888 751

Type:

Apartment

Sold Date:

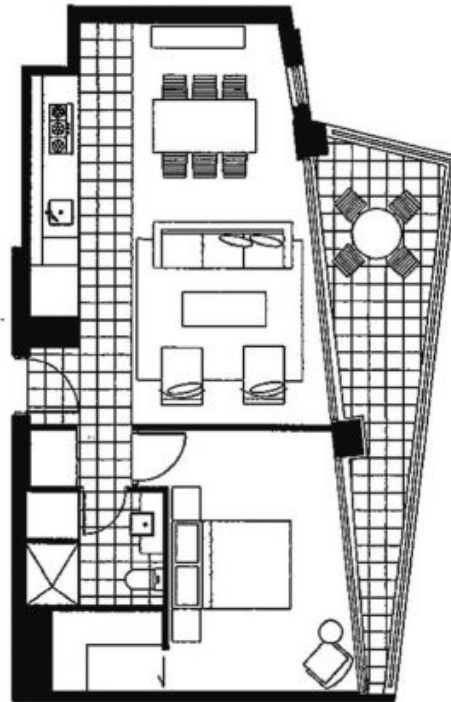
29/12/2020

<https://www.resbymirvac.com>

1208/60 LORIMER STREET, DOCKLANDS



This floorplan is an artist's impression only, it contains information that we believe to be reliable however we cannot guarantee and accept no responsibility for the accuracy of information supplied. All dimensions are indicative and listed in metres. Interested parties should take their own measurements or engage the services of a licensed surveyor.



Plans shown are only indicative of layout. Dimensions are approximate.

DOCKLANDS, VIC
1208/60 Lorimer Street