



DOCKLANDS, VIC
2804/70 Lorimer Street

2 BED 2 BATH 2 CAR RES

Rooms with a view!

Brilliantly located on Level 28 in Tower 3 at Yarra's Edge, you are close enough to enjoy all the activity of the Marina and experience the magnificent river and city views. A new kitchen with state of the art appliances is the centrepiece of one of the most highly desired properties on the market, where the owners have invested liberally in both style and substance. Relax or entertain in the massive open plan living space, providing a feeling of space and comfort, all completely north facing on the banks of the Yarra flowing onto the full width balcony and that postcard view of the marina and Melbourne's city skyline.

The large master bedroom provides built in wardrobes and ensuite bathroom with his/her basins and separate bath. Second bedroom also includes wardrobes and is smartly positioned opposite the main central bathroom. Further features include central heating and cooling, two car spaces - this is an apartment not to be missed!

\$775 per week

Contact: Baden Lucas
03 9645 1199
0418 888 751

Type: Apartment

Date Available: 02/12/2020

Leased Date: 18/12/2020

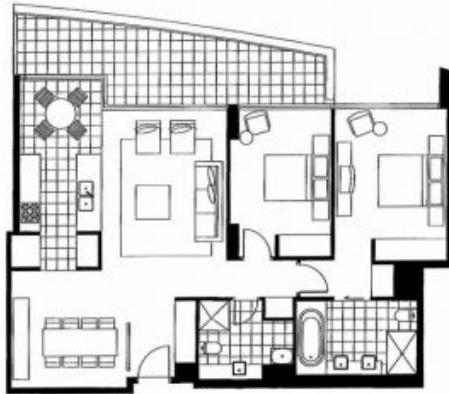
Bond: \$4650

<https://www.resbymirvac.com>

Living	3.6 x 5.5	Bedroom 1	3.3 x 3.8	Plus Robe
Breakfast	2.2 x 2.4	Bedroom 2	3.0 x 3.7	Plus Robe
Dining	3.4 x 3.4			

Please note that this floor plan is a guide only. The information contained herein is not guaranteed. Dimensions are approximate. Prospect purchasers must rely on their own enquiries.

Tower 3
Apartment 04
Level 12 - 28



Plans shown are only indicative of layout. Dimensions are approximate.

DOCKLANDS, VIC
2804/70 Lorimer Street