

ST LEONARDS, NSW

2609/472 Pacific Highway

2 BED **2** BATH **1** CAR



Sleek modern living in St Leonard's Square

Perched on the 26th floor of the William Building, this sumptuous sky-home promises a divine executive lifestyle central to St Leonards train station and the heart of vibrant Crows Nest. It basks in a sun-drenched north aspect and enjoys an open plan indoor/outdoor design and expansive district views. Resort-style facilities complete the picture of utter luxury.

- Functional layout, long entrance hall, floor-to-ceiling glass
- Open plan kitchen and spacious living/dining flowing out
- Stone bench tops, gas Miele appliances plus dishwasher
- Balcony with far-reaching views ideal for alfresco dining
- Bedrooms with built-ins, fully tiled bathrooms plus laundry
- Ducted air conditioning, secure parking with lift access

Price Guide \$1,700,000 - \$1,800,000

Council Rates: \$1,000/year (approx)

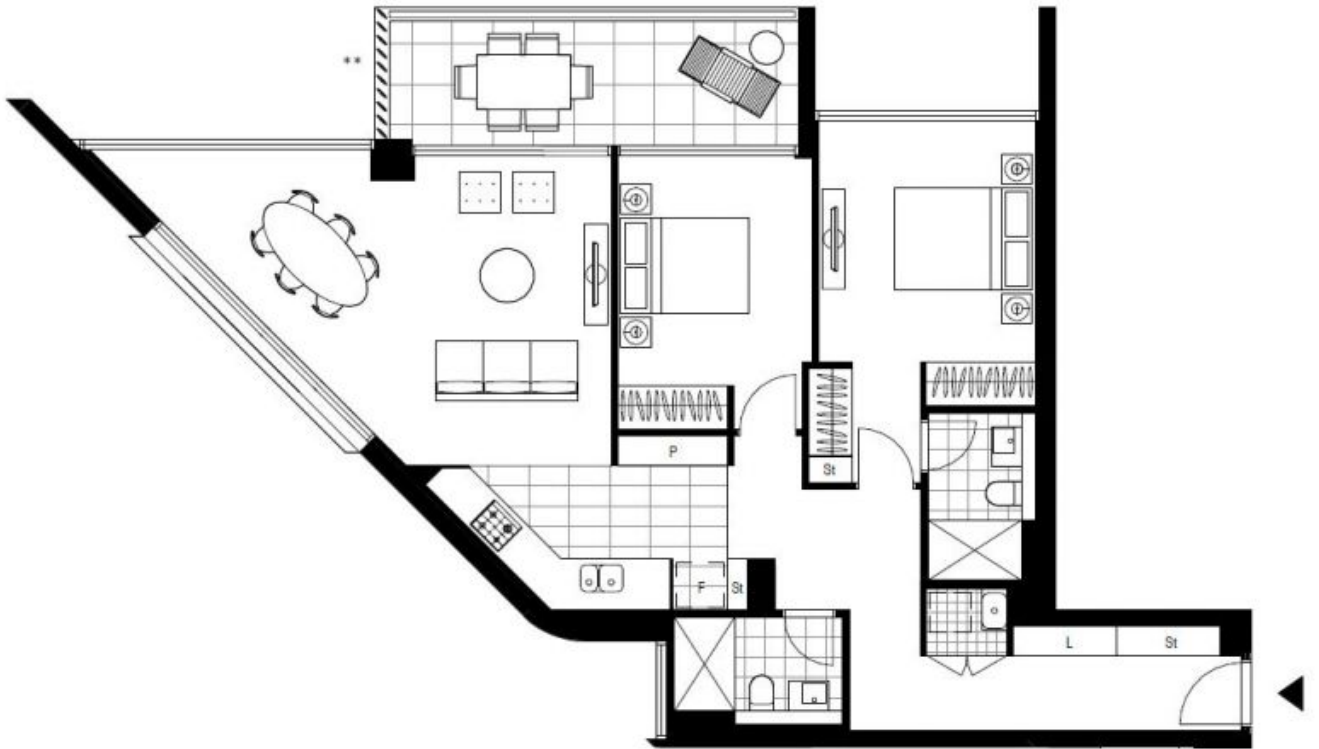
Strata Rates: \$6,920/year (approx)

Contact: Matthew Matthews
02 8588 8888
0418 266 590

Type: Apartment

Date Available: 26/11/2020

<https://www.resbymirvac.com>



Plans shown are only indicative of layout. Dimensions are approximate.

ST LEONARDS, NSW
2609/472 Pacific Highway