



EAST MELBOURNE, VIC

517/280 Albert Street

2
BED

2
BATH

2
CAR



Effortless Elegance ?2-bedroom apartment with park views

Imagine living opposite Fitzroy Gardens in ?The Eastbourne? apartment complex. Where elegance is timeless in this stunning two bedroom apartment, defined by bespoke luxury and style plus an amazing array of communal amenities. Highlighted by a sophisticated and spacious interior featuring a generous living area with prestige Miele appliances and integrated fridge/freezer opening to a balcony with park and city views, two sparkling bathrooms and concealed laundry; plus two basement car spaces & storage cage.

Resident facilities are second-to-none ? see offerings below.

Apartment features:

\$925 per week

Contact: Property Management

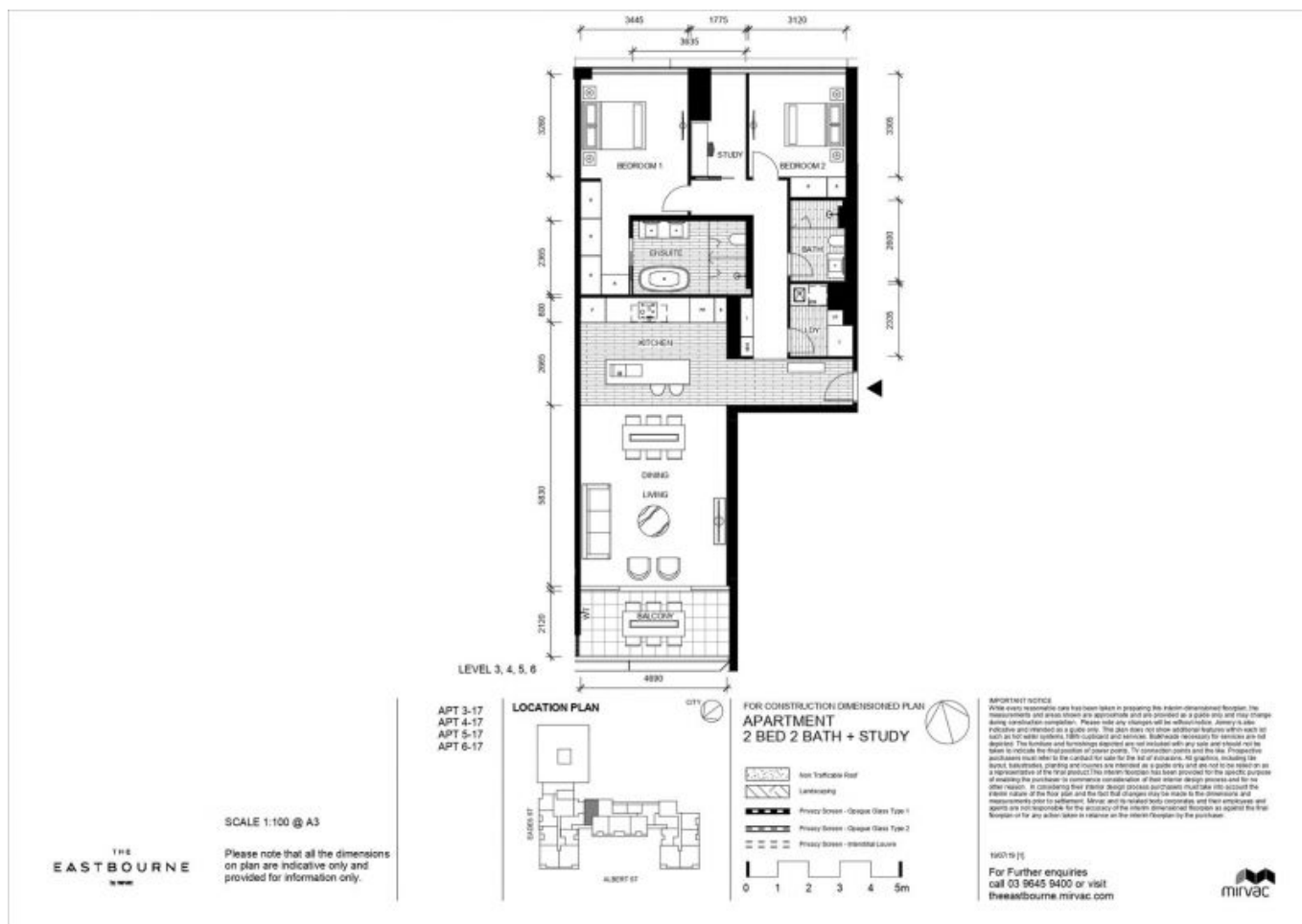
Type: Apartment

Date Available: 13/11/2020

Leased Date: 13/11/2020

Bond: \$5550

<https://www.resbymirvac.com>



Plans shown are only indicative of layout. Dimensions are approximate.

EAST MELBOURNE, VIC
517/280 Albert Street