

DEPOSIT TAKEN

More apartments available for lease in Green Square - Zetland!

Please call our leasing hotline 0497 555 519 for more information



GREEN SQUARE



ZETLAND, NSW
1106/6 Ebsworth Street

2 BED **2** BATH **1** CAR 

Oversized 2-Bedroom Apartment with Parking in Ovo Tower!

This 103sqm, 11th floor Apartment features:

- Well-appointed bedrooms with generous built-in wardrobes
- Open-plan living and dining area, leading to the balcony
- Contemporary kitchen with stone benchtops and built-in appliances
- Modern bathrooms with plenty of vanity storage, bath in ensuite
- North-facing balcony, with sweeping city views
- Internal laundry with dryer included
- Study nook of bedroom, perfect for a home office
- Secure car space and storage cage included
- Ducted A/C, video intercom and NBN connectivity
- 300m to Woolworths, The Social Corner and Green Square Train Station (10mins to the City)

More Apartments Available!

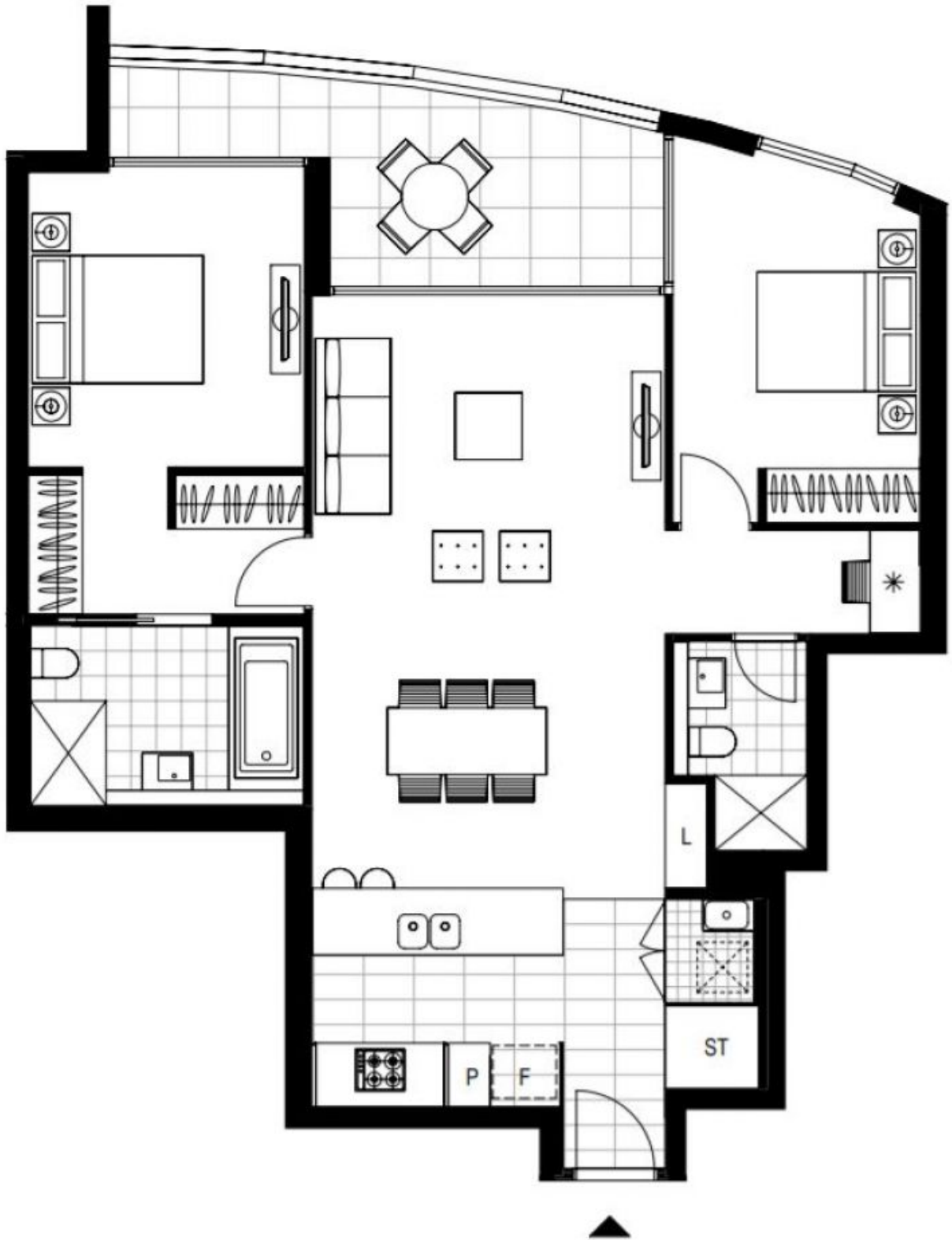
Contact: Carmen Whiteley
02 8588 8888
0497 555 519

Type: Apartment

Date Available: 04/11/2020

Bond: \$2600

<https://www.resbymirvac.com>



Plans shown are only indicative of layout. Dimensions are approximate.

ZETLAND, NSW
1106/6 Ebsworth Street