



## DOCKLANDS, VIC

2504/81 South Wharf Drive

3  
BED

2  
BATH

2  
CAR



### River Side Luxury

Forge is one of Melbourne's luxury waterfront address, enjoy this three bedroom apartment in the prestigious Yarra's Edge precinct.

Next generation interiors feature gourmet kitchens complemented by European appliances, including dishwasher and fridge, and designer bathrooms finessed with chic fittings and luxe matt and metallic finishes. Expansive glazing, balconies and a plethora of winter gardens create light-filled living environments and sweeping vistas of the city, the Yarra River, the Bolte Bridge and Port Phillip Bay.

Forge residents will enjoy spaces that extend their personal living environment. A private dining room and cinema can be reserved by residents who want to elevate their gathering with plush surrounds and cityscape views in addition to the luxurious state-of-the-art health and wellbeing facility 'Wharf Club' to be housed beneath an inclined grass roof. It will be complemented by a caf? overlooking the water as well as the

Wharf's Landing Park.

Book your private inspection or join us for a virtual tour today!

Please note, resident access to any common facilities is at the discretion of the Owners Corporation or facility company managing these amenities. If building facilities are not available to residents (ex: due to COVID or capital improvements) this has no correlation to the rent paid or tenancy agreement.

**\$800 per week**

**Contact:** Baden Lucas  
03 9645 1199  
0418 888 751

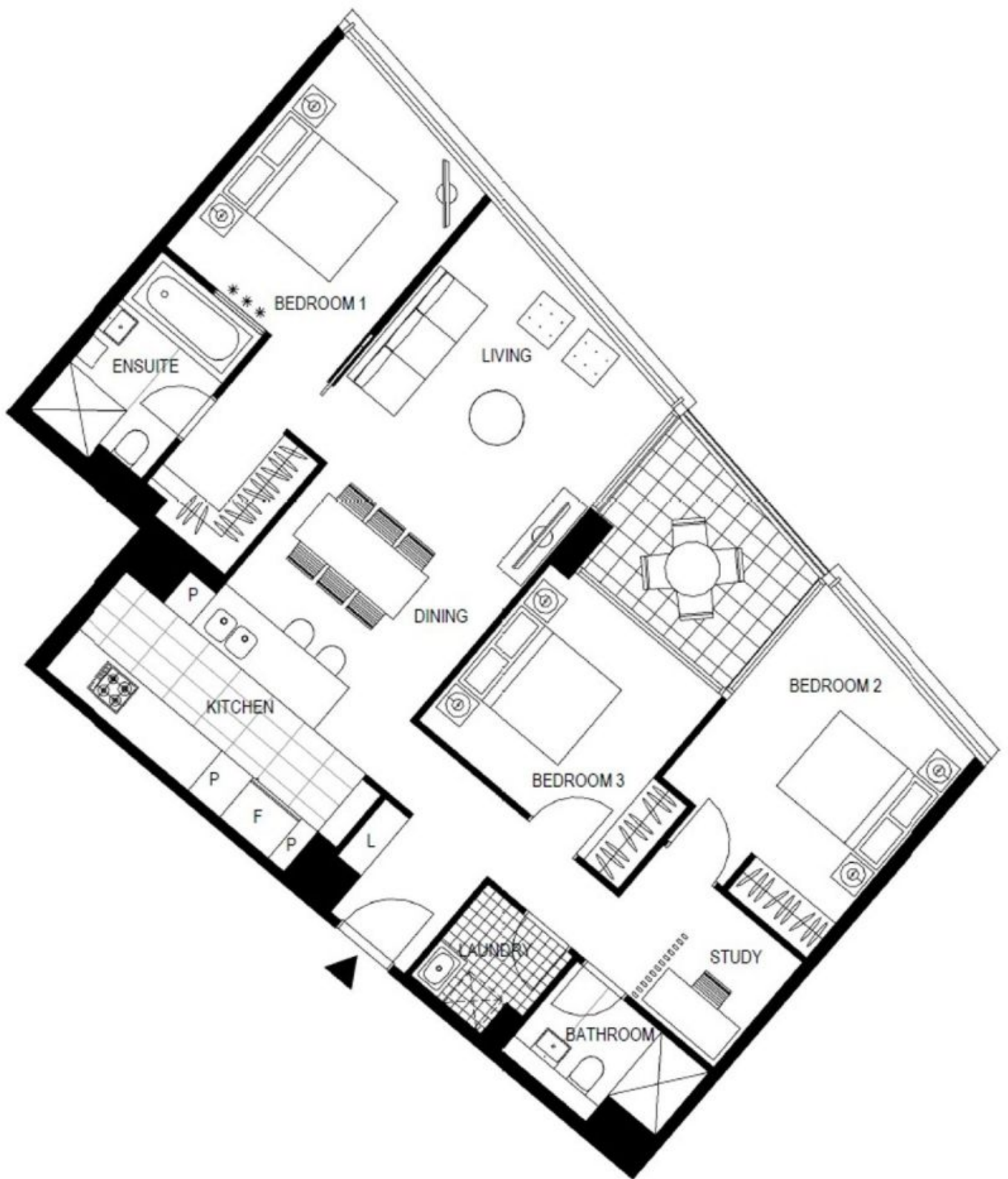
**Type:** Apartment

**Date Available:** 09/10/2020

**Leased Date:** 05/11/2020

**Bond:** \$4800

**<https://www.resbymirvac.com>**



Plans shown are only indicative of layout. Dimensions are approximate.

**DOCKLANDS, VIC**  
2504/81 South Wharf Drive