



DOCKLANDS, VIC

1601/81 South Wharf Drive

2
BED

2
BATH

2
CAR



Live Your Modern Dream in Wharf's Entrance

Brimming with lavish Docklands luxury that has the added benefit of being close to new condition, this two bedroom, two bathroom apartment in the newest member of the Yarra's Edge team. 'Forge Apartments' is a true urban oasis.

A practical and thoughtful layout has magnificent views out to the nearby NewQuay and Victoria Harbour precincts as well as the CBD. These lasting vistas can be seen from the sizeable undercover balcony, the ultra-spacious lounge and dining zone and the master bedroom conveniently appointed by an exquisite ensuite inclusive of bath and dual vanities.

The designer stone kitchen has stainless steel Smeg appliances, island bench and the ideal location overlooking the open plan living area. The second bedroom delivers gorgeous Bay vistas framed by elegant curved windows with BIR's while other extras include a European laundry, ducted

heating and cooling, video intercom entry, 2 secure car spaces and access to the Wharf's Club with gym and pool plus a private kitchen/dining room and cinema.

This Forge apartment is positioned in the new Wharf's Entrance area (within Yarra's Edge) which delivers a quiet and almost village-like lifestyle where you're within easy reach of South Wharf restaurants and bars, DFO outlet shopping, public transport, and Citylink.

\$850,000 - \$900,000

Contact: Baden Lucas
03 9645 1199
0418 888 751
Baden Lucas
03 9645 1199
0418 888 751

Type: Apartment

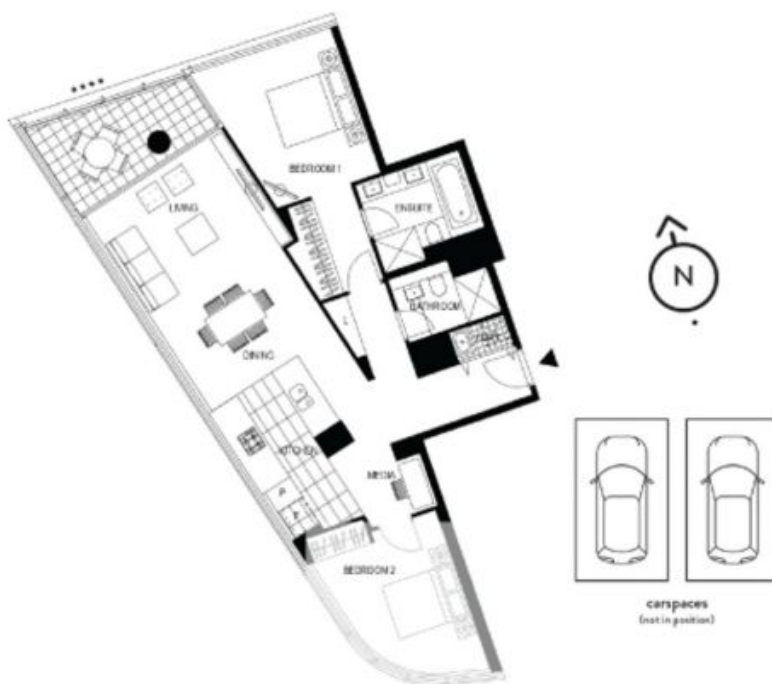
Sold Date: 08/04/2021

<https://www.resbymirvac.com>

1601/81 SOUTH WHARF DRIVE, DOCKLANDS



This floorplan is an artist's impression only, it contains information that we believe to be reliable however we cannot guarantee and accept no responsibility for the accuracy of information supplied. All dimensions are indicative and listed in metres. Interested parties should take their own measurements or engage the services of a licensed surveyor.



Plans shown are only indicative of layout. Dimensions are approximate.

DOCKLANDS, VIC
1601/81 South Wharf Drive