

## ZETLAND, NSW

705/28 Ebsworth Street

**1**  
BED

**1**  
BATH



### Tiled 1-Bedroom Apartment in Green Square, Zetland

This 66sqm, 7th floor Apartment features:

- Spacious bedroom with generous built-in wardrobe
- Tiled living and dining area, leading to the balcony
- Modern kitchen with stone benchtops and built-in Smeg appliances
- Stylish bathroom with plenty of vanity storage
- Sunny and spacious balcony, perfect for entertaining
- Internal laundry with dryer included
- Secure storage cage included
- Ducted A/C, video intercom and NBN connectivity
- 300m to Woolworths, The Social Corner and Green Square Train Station (10mins to the City)

### DEPOSIT TAKEN - More Apartments Available!

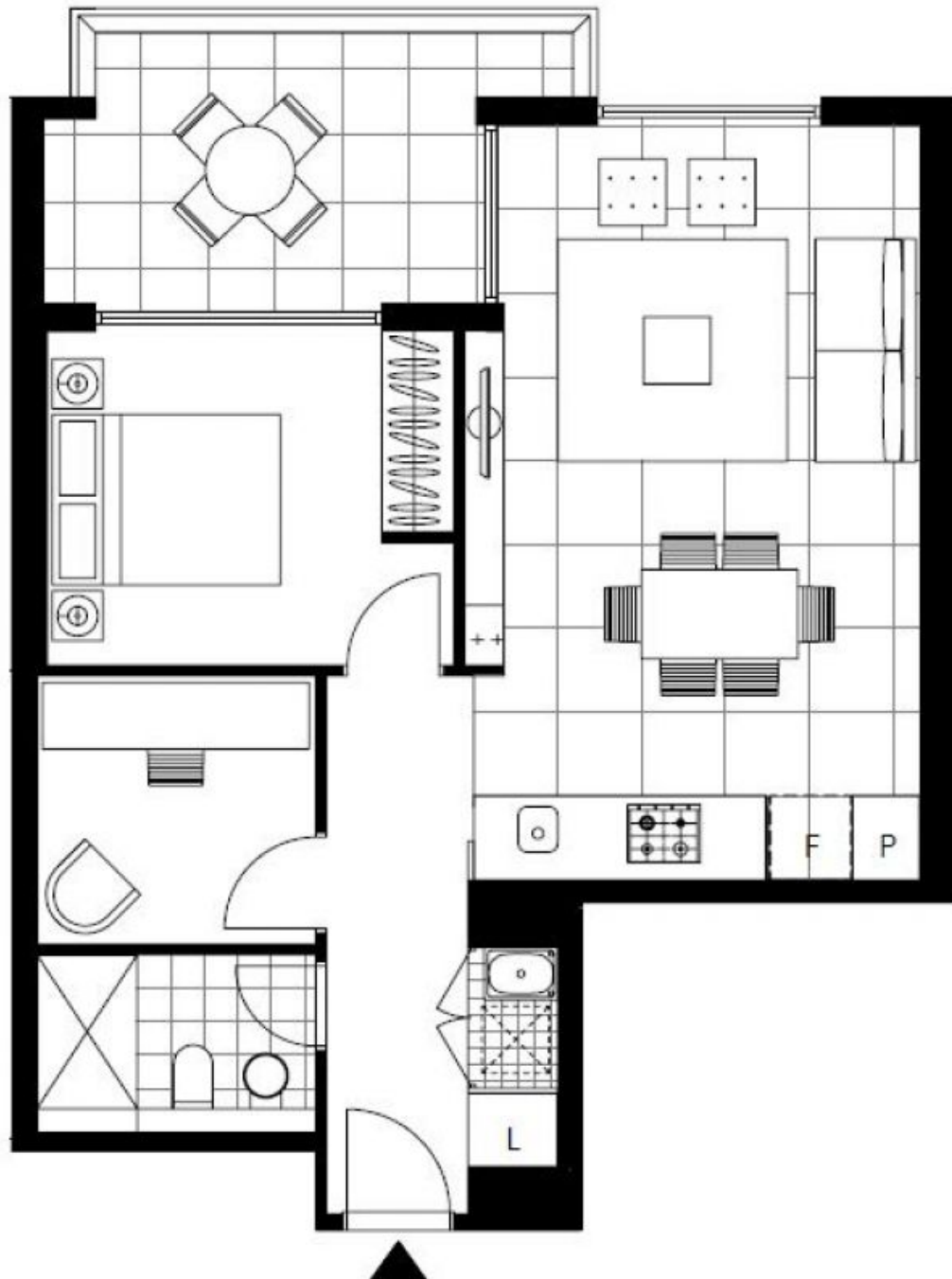
**Contact:** Carmen Whiteley  
02 8588 8888  
0497 555 519

**Type:** Apartment

**Date Available:** 09/10/2020

**Bond:** \$2080

<https://www.resbymirvac.com>



Plans shown are only indicative of layout. Dimensions are approximate.

**ZETLAND, NSW**  
705/28 Ebsworth Street