



**EAST MELBOURNE, VIC**  
715/280 Albert Street

**1** BED **1** BATH



**The Eastbourne ? 1 bedroom High end living**

\*\*\*Images shown are of a similar apartment\*\*\*

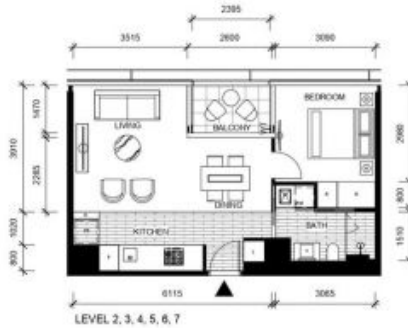
Imagine living opposite Fitzroy Gardens in ?The Eastbourne? apartment complex. Where elegance is timeless in this stunning one bedroom apartment, defined by bespoke luxury and style plus an amazing array of communal amenities. Highlighted by a sophisticated and spacious interior featuring a generous living area and kitchen with prestige Miele appliances, a sparkling bathroom and concealed laundry; plus one basement car space & storage locker.

Apartments feature:  
Bespoke design, quality construction and finishes

**\$450 per week**

**Contact:** Baden Lucas  
03 9645 1199  
0418 888 751  
Aleisha Clark  
03 9645 1199  
0491 174 507

**Type:** Apartment  
**Date Available:** 20/10/2020  
**Leased Date:** 01/03/2021  
**Bond:** \$2700  
<https://www.resbymirvac.com>



LEVEL 2, 3, 4, 5, 6, 7

THE EASTBOURNE

SCALE 1:100 @ A3

Please note that all the dimensions on plan are indicative only and provided for information only.

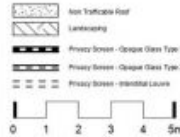
- APT 2-15
- APT 3-15
- APT 4-15
- APT 5-15
- APT 6-15
- APT 7-15

LOCATION PLAN



CITY

FOR CONSTRUCTION DIMENSIONED PLAN  
APARTMENT  
1 BED 1 BATH



APARTMENT NOTES

Other exact topographic data has been taken in preparing this interim dimensioned floorplan. The measurements and areas shown are approximate and are provided as a guide only and may change during construction completion. Please note any changes will be self-revisive. Areas in this plan are indicative and intended as a guide only. This plan does not show additional features within each lot such as lift shaft systems, lift shafts and service. Building materials for finishes are not specified. The finishes and materials depend on the materials with any cost and should not be used to make the final decision of their quality. To construction contract and the final construction documents made in the contract for sale for the lot of purchase. No guarantee, warranty or liability, statements, drawings and plans are intended as a guide only and do not to be relied on as a representation of the final product. The design document has been provided for the specific purpose of enabling the purchaser to commence consideration of their interior design process and for no other reason. In considering their design process purchasers should take into account the floor plan and the fact that changes may be made to the dimensions and measurements prior to settlement. Minor and technical corrections and their amendments and queries are not responsible for the accuracy of the interim dimensioned floorplan as against the final floorplan or any action taken in reliance on the interim floorplan by the purchaser.

16/01/15

For Further enquiries  
call 03 9645 9400 or visit  
[theeastbourne.mirvac.com](http://theeastbourne.mirvac.com)



Plans shown are only indicative of layout. Dimensions are approximate.

**EAST MELBOURNE, VIC**  
715/280 Albert Street