

## DOCKLANDS, VIC

1207/1 Point Park Crescent

2  
BED

1  
BATH

1  
CAR



### Breathtaking corner living with stylish character

Make the most of the wonderful corner position, sleek and stylish interiors, and superb entertainer's balcony when you consider this modern and easy care two bedroom apartment which has an enviable position in the Yarra Point complex. This excellent 12th floor residence is an ideal choice with the light-filled and relaxed central living and meals provides a sizeable area suited for morning breakfasts and lazing in front of the TV after a long day at work. This zone further opens out to a long balcony where you can enjoy summer sunsets with wine or beer in hand.

The stone kitchen has a high end feel with luxe benchtops, moveable island bench, and stainless steel Miele appliances. Both bedrooms are equipped with built-in robes and are in close proximity to the gorgeous bathroom, meanwhile further embrace a European laundry, ducted heating and cooling, secure intercom, secure car space, and access to RekDek with gym, pool, spa, steam room, and sauna.

### \$500 per week

**Contact:** Baden Lucas  
03 9645 1199  
0418 888 751

**Type:** Apartment

**Date Available:** 11/09/2020

**Leased Date:** 13/01/2021

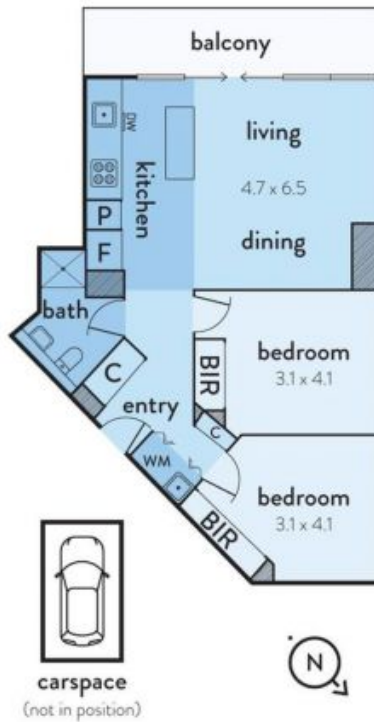
**Bond:** \$3000

<https://www.resbymirvac.com>

## 1207/1 POINT PARK CRESCENT, DOCKLANDS



This floorplan is an artist's impression only, it contains information that we believe to be reliable however we cannot guarantee and accept no responsibility for the accuracy of information supplied. All dimensions are indicative and listed in metres. Interested parties should take their own measurements or engage the services of a licensed surveyor.



Plans shown are only indicative of layout. Dimensions are approximate.

**DOCKLANDS, VIC**  
1207/1 Point Park Crescent