

## SYDNEY OLYMPIC PARK, NSW

20807/2 Figtree Drive

**2**  
BED

**2**  
BATH

**1**  
CAR



### More apartments wanted - Call Christine on 0459 222 085 today!

This Level 8, 89sqm apartment features:

- Spacious bedrooms with generous built-in wardrobes
- Open-plan living and dining area, great for entertaining
- Contemporary kitchen with stone benchtop and Smeg appliances
- Sleek bathrooms with generous vanity storage
- Sunny North-facing balcony, with access from living and bedrooms
- Internal laundry with dryer included
- Secure car space and storage cage included
- Ducted A/C, video intercom and NBN connectivity
- Resident access to gym, community room and open BBQ area
- 550m to the Olympic Park Train Station, 650m to the Bicentennial Park, 700m to ANZ Stadium

### Apartments Wanted!

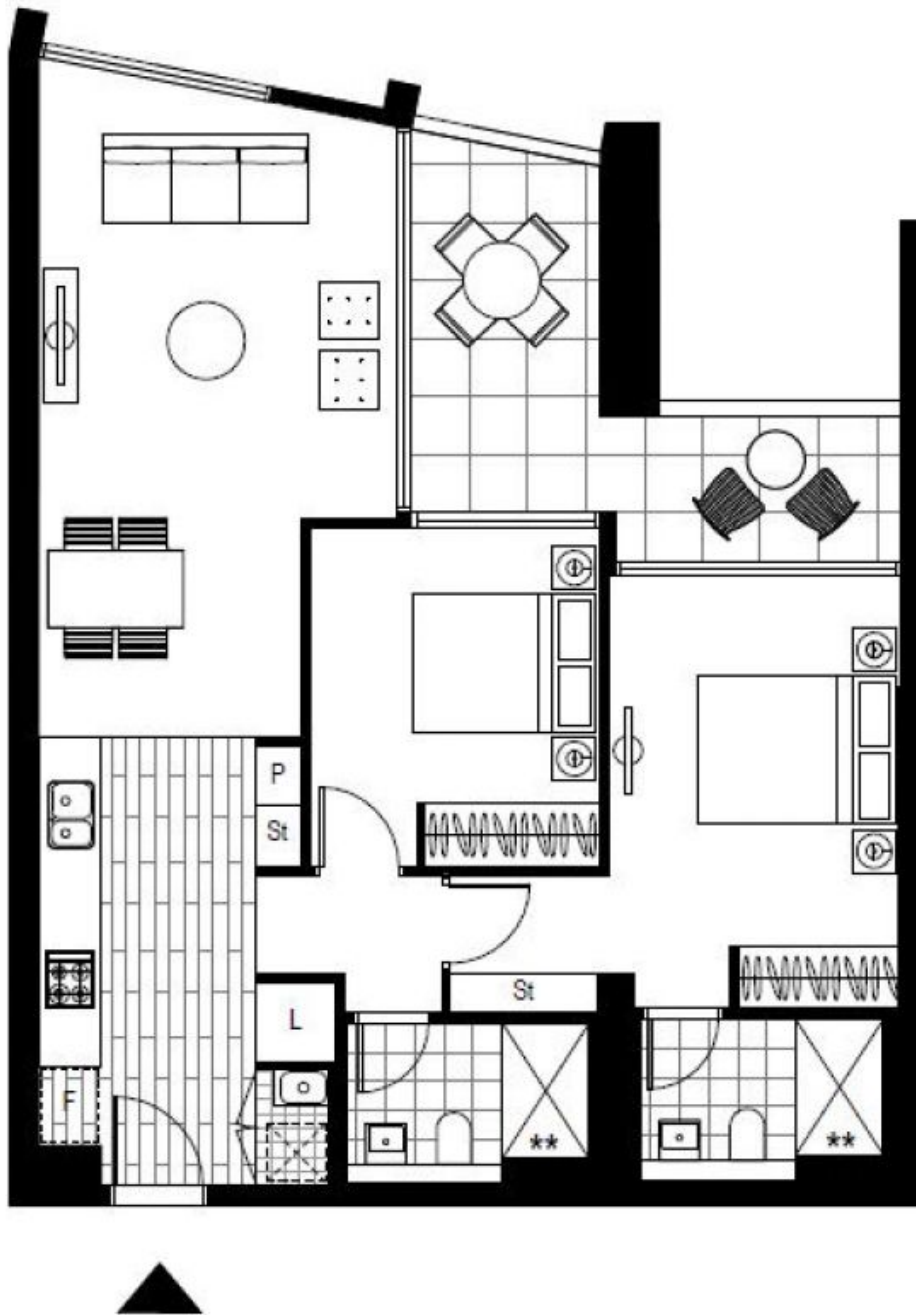
**Contact:** Christine Howison  
02 8588 8888  
0459 222 085

**Type:** Apartment

**Date Available:** 05/06/2021

**Bond:** \$2120

<https://www.resbymirvac.com>



Plans shown are only indicative of layout. Dimensions are approximate.

**SYDNEY OLYMPIC PARK, NSW**  
20807/2 Figtree Drive