



DOCKLANDS, VIC

2106/50 Lorimer Street

2 BED **1** BATH **1** CAR 

Your entry into Yarra's Edge

Positioned on the 21st floor of Tower 1, this two bedroom apartment has so much to offer.

This apartment is superbly nestled amongst Docklands finest residential precinct, with restaurants and shopping a moment away, along with South Wharf shopping district, Etihad Stadium and ease of access into Melbourne's CBD. Offering a generous master bedroom and second bedroom both with built in robes, large open plan living/dining area and your own private balcony with breathtaking dual aspect views of the marina below and Port Phillip Bay. Add a European laundry and central ducted heating and cooling throughout and this one tick all the boxes. * Dryer and Fridge included*

\$525 per week

Contact: Property Management
0304541199

Type: Apartment

Date Available: 05/10/2020

Leased Date: 27/11/2020

Bond: \$3150

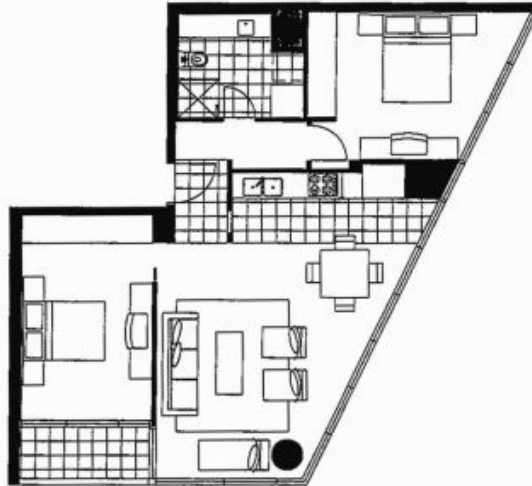
<https://www.resbymirvac.com>

lucas | real estate

Tower 1
Apartment 06
Level 8 - 29

Living	3.3 x 4.1	Bedroom 1	3.4 x 3.6	Plus Robe
Dining	2.0 x 3.2	Bedroom 2	4.1 x 3.0	Plus Robe

Please note that this floor plan is a guide only.
The information contained herein is not guaranteed.
Dimensions are approximate. Prospect purchasers
must rely on their own enquiries.



9645 1199
62 River Esplanade Victoria 3008
www.lucasre.com.au

Plans shown are only indicative of layout. Dimensions are approximate.

DOCKLANDS, VIC
2106/50 Lorimer Street