



DOCKLANDS, VIC

1504/90 Lorimer Street

3 BED **2** BATH **2** CAR 

Perfect views over the Yarras Edge

This as new 3 bedroom apartment is situated on the 15th floor of Mirvac's opulent Tower 5 and enjoys the most spectacular views of the city skyline, Docklands, South Melbourne and beyond.

Superbly located and immaculately presented, this apartment is finished to the most exacting standards and offers space and light often sought yet rarely found.

The executive style apartment features a magnificent entertaining balcony and the gourmet kitchen is fully equipped with stainless steel appliances, dishwasher and caesarstone benchtops. The master bedroom has a generous walk in wardrobe and the stunning ensuite has a separate bath and shower whilst each of the other two bedrooms share the stylish contemporary bathroom.

\$950 per week

Contact: Baden Lucas
03 9645 1199
0418 888 751

Type: Apartment

Date Available: 30/09/2020

Leased Date: 17/09/2020

Bond: \$5700

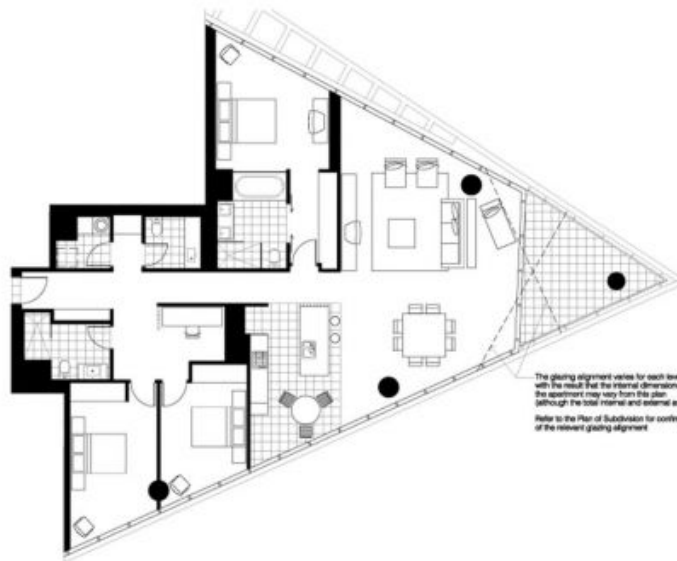
<https://www.resbymirvac.com>

Internal Area
Balcony Area
Total Area

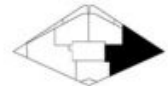
184sq.m
11sq.m
195sq.m

Please note that this floor plan is a guide only.
The information contained herein is not guaranteed.
Dimensions are approximate. Prospective
purchasers must rely on their own enquiries.

Tower 5
Apartment 04
Level 7 - 31



The glazing alignment varies for each level
with the result that the internal dimensions of
the apartment may vary from this plan.
(although the total internal and external area remains unchanged).
Refer to the Plan of Subdivision for confirmation
of the relevant glazing alignment.



Plans shown are only indicative of layout. Dimensions are approximate.

DOCKLANDS, VIC
1504/90 Lorimer Street