



DONCASTER, VIC

224/65 Stables Circuit

2 BED **2** BATH **1** CAR



Delightful 2-bedroom overlooking parklands

At just one year young the Phoenix is Tullamore's premier residential apartment complex with lush parkland on its doorstep; where style, privacy and timeless design blends with nature, beauty and freedom. Unique and limited, this is a lifestyle of distinction.

Apartment features:

- ? Bespoke design, quality construction and finishes
- ? Large internal space of 87m2
- ? Balcony ? 17m2 ? overlooking park
- ? Storage cage near car space
- ? Ducted heating & refrigerated cooling throughout
- ? Twin shower upgrade
- ? Timber look laminate desk with 2 overhead shelves

\$500 per week

Contact: Baden Lucas
03 9645 1199
0418 888 751

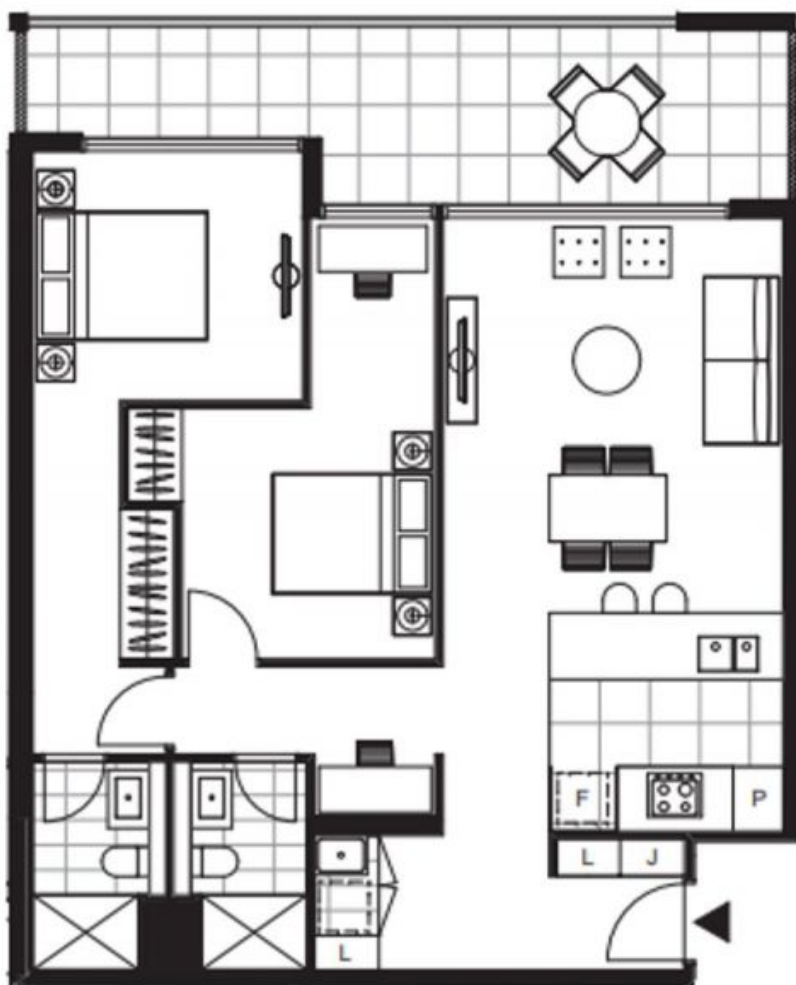
Type: Apartment

Date Available: 01/09/2020

Leased Date: 12/11/2020

Bond: \$3000

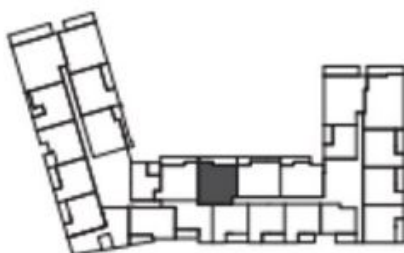
<https://www.resbymirvac.com>



LEVEL 02, 04

APT 2.24
APT 4.24

LOCATION PLAN



APARTMENT TYPE
2 BED, 2 BATH + MEDIA

INTERNAL AREA	87 m ²
BALCONY AREA	17 m ²
TOTAL AREA	104 m ²

Area subject to final survey, area includes balcony and/or terrace where applicable. It excludes parking and external storage areas.

Plans shown are only indicative of layout. Dimensions are approximate.

DONCASTER, VIC
224/65 Stables Circuit