



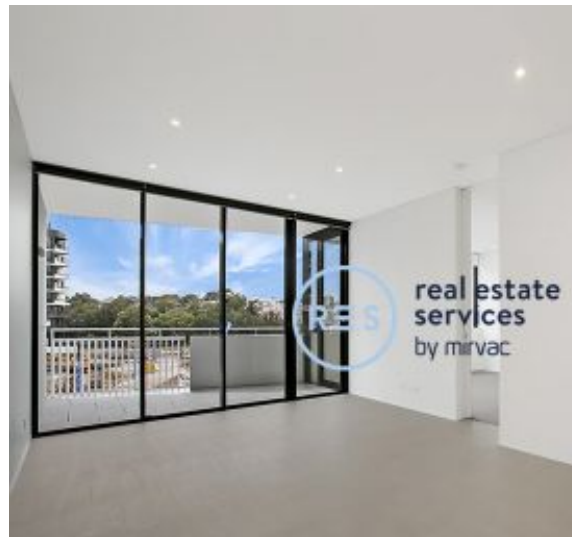
DEPOSIT TAKEN

# More apartments available for lease in Harold Park!

Please call 0401 545 440 or email [harry.kinezos@resbymirvac.com](mailto:harry.kinezos@resbymirvac.com) for more information

[www.resbymirvac.com](http://www.resbymirvac.com)

**HAROLD PARK**  
GLEBE'S SECRET BACKYARD



**GLEBE, NSW**  
103/6 Maxwell Road

**2** **2** **1**  
BED BATH CAR



## Stylish, Park Facing 2-Bedroom Apartment in Mirvac's Harold Park

This 97sqm, 2-Bedroom Apartment in 'Maxwell' features:

- Large bedrooms with generous built-in wardrobes
- Tiled open-plan living and dining area, ideal for entertainers'
- Sleek and stylish kitchen with stone benchtops and built-in Miele appliances
- Ultramodern bathrooms with plenty vanity storage, freestanding bath in ensuite
- Spacious park facing balcony, with access from living and main bed
- Internal laundry with washing machine and dryer included
- Secure car space and storage cage included
- Ducted A/C, video intercom and NBN connectivity

## Call 0401 545 440 for similar apartments!

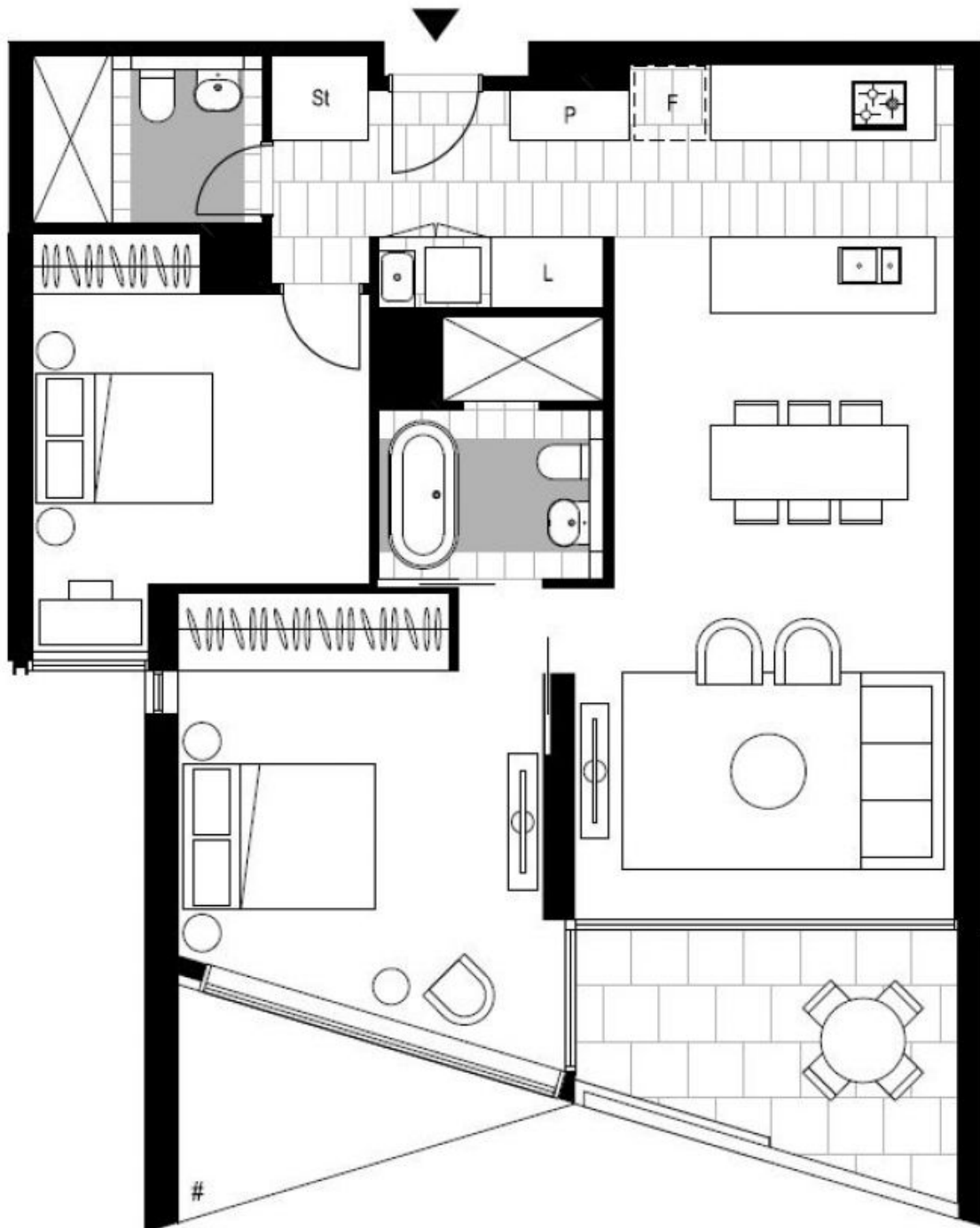
**Contact:** Naz Sabzpouri  
02 8588 8888  
0401 545 440

**Type:** Apartment

**Date Available:** 24/08/2020

**Bond:** \$2960

<https://www.resbymirvac.com>



Plans shown are only indicative of layout. Dimensions are approximate.

**GLEBE, NSW**  
103/6 Maxwell Road