



DEPOSIT TAKEN

More apartments available for lease in Green Square - Zetland!

Please call 0497 555 519 or email carmen.whiteley@resbymirvac.com for more information



GREEN SQUARE



ZETLAND, NSW
806/18 Ebsworth Street

1
BED

1
BATH



Bright 1-Bedroom Apartment in Green Square, Zetland

This 60sqm, 8th floor Apartment features:

- Large bedroom with generous built-in wardrobe
- Tiled living and dining area, great for entertaining
- Galley style kitchen with stone benchtop and Smeg appliances
- Sleek bathroom with plenty of vanity storage
- South-West facing balcony accessible from living area and bedroom
- Internal laundry with dryer included
- Secure storage cage included
- Ducted A/C, video intercom and NBN connectivity
- 300m to Woolworths, The Social Corner and Green Square Train Station (10mins to the City)

DEPOSIT TAKEN - More Apartments Available!

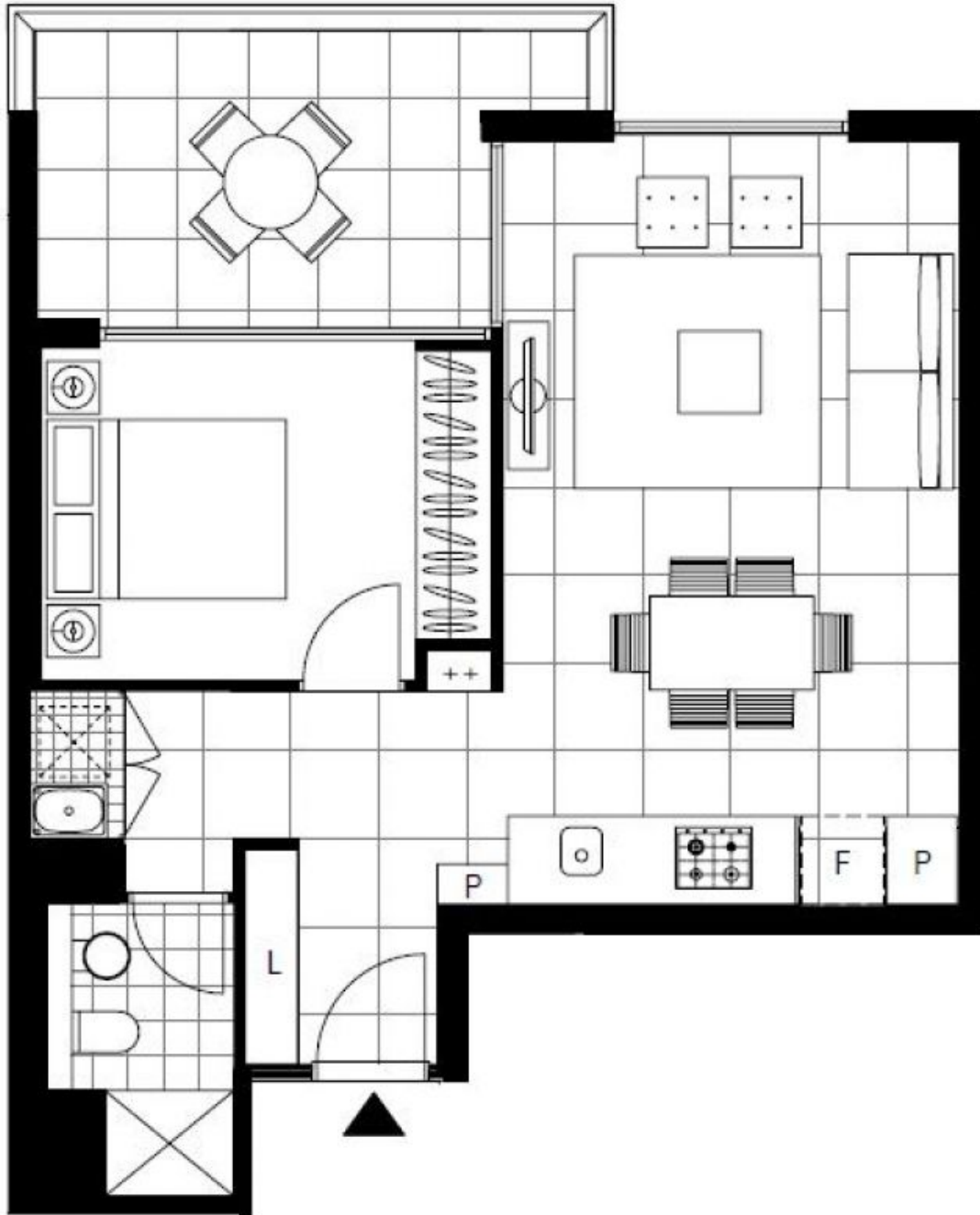
Contact: Carmen Whiteley
02 8588 8888
0497 555 519

Type: Apartment

Date Available: 20/08/2020

Bond: \$2080

<https://www.resbymirvac.com>



Plans shown are only indicative of layout. Dimensions are approximate.

ZETLAND, NSW
806/18 Ebsworth Street