

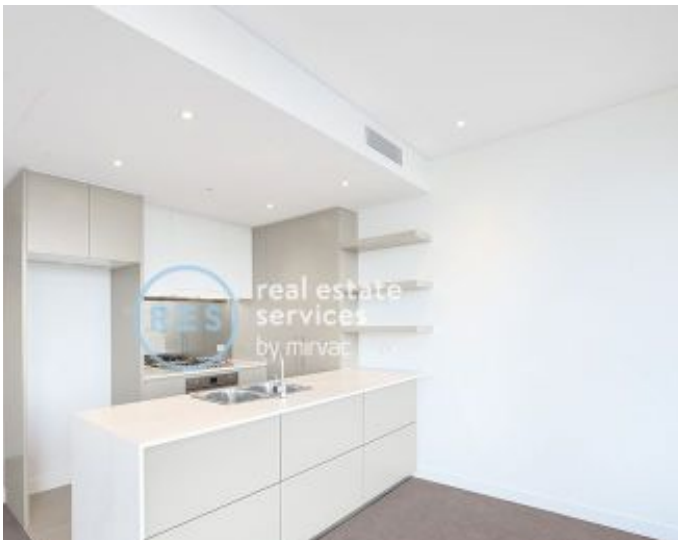
New Selection of 3 Bedroom Apartments

Rental from \$680pw – \$950pw

Call or text the rental hotline 0459 222 085 for your private tour or

INSPECT SATURDAY 11.00am – 2.00pm

Meet the leasing team at 2 Figtree Drive, Sydney Olympic Park



SYDNEY OLYMPIC PARK, NSW
20602/2 Figtree Drive

3 BED **2** BATH **2** CAR 

Brand New East Facing 3 Bedroom + Media Apartment in Pavilions By Mirvac

This 117sqm, 3-Bedroom + Media Apartment features:

- Spacious bedrooms with generous built-in wardrobes
- Open-plan living and dining area, leading to the balcony
- Contemporary kitchen with stone benchtops and Smeg appliances
- Sleek bathrooms with generous vanity storage, bath in ensuite
- East facing sunny balcony, perfect for entertaining
- Internal laundry with dryer included
- Media nook, perfect for a home office
- 2 secure car spaces (in tandem) and storage cage included
- Ducted A/C, video intercom and NBN connectivity
- Resident access to gym, community room and open BBQ area

Deposit Taken - Another Available!

Contact: Christine Howison
02 8588 8888
0459 222 085

Type: Apartment

Date Available: 26/08/2020

Bond: \$2600

<https://www.resbymirvac.com>



Plans shown are only indicative of layout. Dimensions are approximate.

SYDNEY OLYMPIC PARK, NSW
20602/2 Figtree Drive