

DEPOSIT TAKEN

More apartments available for lease

Please call 02 8588 8888 or
email enquiries@resbymirvac.com to book your inspection today

www.resbymirvac.com

PAVILIONS
RESIDENCES



SYDNEY OLYMPIC PARK, NSW 21712/2 Figtree Drive

2
BED

2
BATH

1
CAR



Premium Brand New 2 Bedroom Apartment in Pavilions By Mirvac

This 90sqm, 2-Bedroom Apartment features:

- Spacious bedrooms with generous built-in wardrobes
- Open-plan living and dining area, leading to the balcony
- Contemporary kitchen with stone benchtops and Smeg appliances
- Sleek bathrooms with generous vanity storage
- Large balcony, perfect for entertaining
- Internal laundry with dryer included
- Secure car space and storage cage included
- Ducted A/C, video intercom and NBN connectivity
- Resident access to gym, community room and open BBQ area
- 550m to the Olympic Park Train Station, 650m to the Bicentennial Park, 700m to ANZ Stadium

DEPOSIT TAKEN!

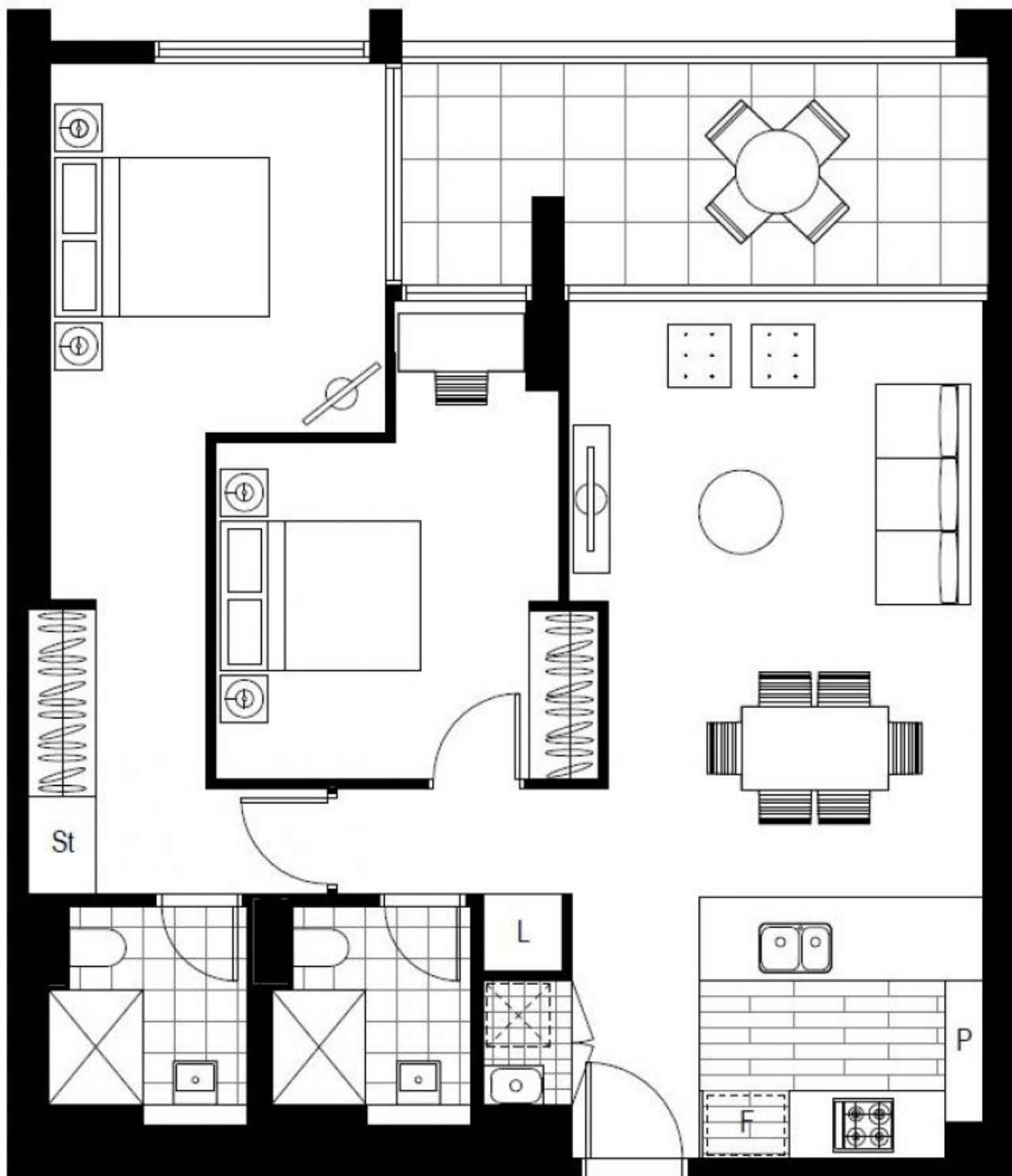
Contact: Christine Howison
02 8588 8888
0459 222 085

Type: Apartment

Date Available: 22/08/2020

Bond: \$2280

<https://www.resbymirvac.com>



Plans shown are only indicative of layout. Dimensions are approximate.

SYDNEY OLYMPIC PARK, NSW
21712/2 Figtree Drive