



**ST LEONARDS, NSW**  
2403/486 Pacific Highway

**2** BED **2** BATH **1** CAR 

**Generous 2-Bedroom Apartment with Parking in St Leonards**

This 89sqm, 2-Bedroom Apartment features:

- Generous bedrooms with built-in wardrobes
- Open-plan living and dining area
- Modern island kitchen with stone benchtops and Miele appliances
- Luxurious bathrooms with plenty of storage, bath in ensuite
- South east-facing balcony with amazing views
- Internal laundry with dryer included
- Secure car space and storage cage included
- Ducted A/C, video intercom and NBN connectivity
- Resident access to the pool, spa, sauna, steam room and outdoor terrace

**Deposit Taken**

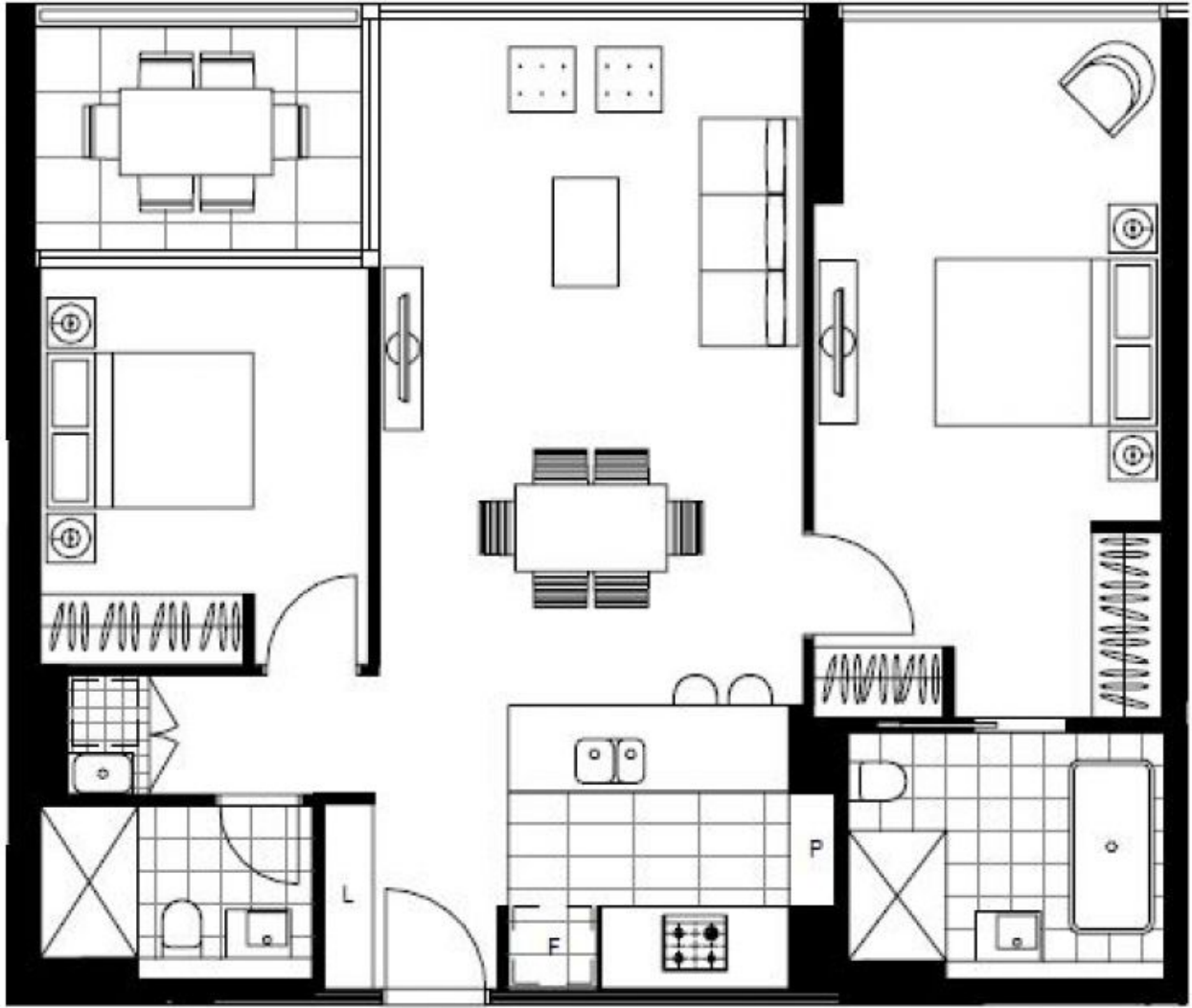
**Contact:** Christine Howison  
02 8588 8888  
0459 222 085

**Type:** Apartment

**Date Available:** 06/08/2020

**Bond:** \$3320

<https://www.resbymirvac.com>



Plans shown are only indicative of layout. Dimensions are approximate.

**ST LEONARDS, NSW**  
2403/486 Pacific Highway