

# DEPOSIT TAKEN

More apartments available for lease

Please call 02 8588 8888 or  
email [enquiries@resbymirvac.com](mailto:enquiries@resbymirvac.com) to book your inspection today

[www.resbymirvac.com](http://www.resbymirvac.com)

PAVILIONS  
RESIDENCES



## SYDNEY OLYMPIC PARK, NSW 23106/2 Figtree Drive

2  
BED

2  
BATH

1  
CAR



### Brand New, High Rise 2-Bedroom Apartment with City Views

This 95sqm, Level 31 Apartment features:

- Spacious bedrooms with generous built-in wardrobes
- Open-plan living and dining area, leading to South-facing balcony
- Contemporary kitchen with stone benchtop and Smeg appliances
- Sleek bathrooms with generous vanity storage
- Internal laundry with dryer included
- Media area included, perfect for a home office
- Secure basement carspace and storage cage included
- Ducted A/C, video intercom and NBN connectivity
- Resident access to gym, community room and open BBQ area
- 550m to the Olympic Park Train Station, 650m to the Bicentennial Park, 700m to ANZ Stadium

### DEPOSIT TAKEN

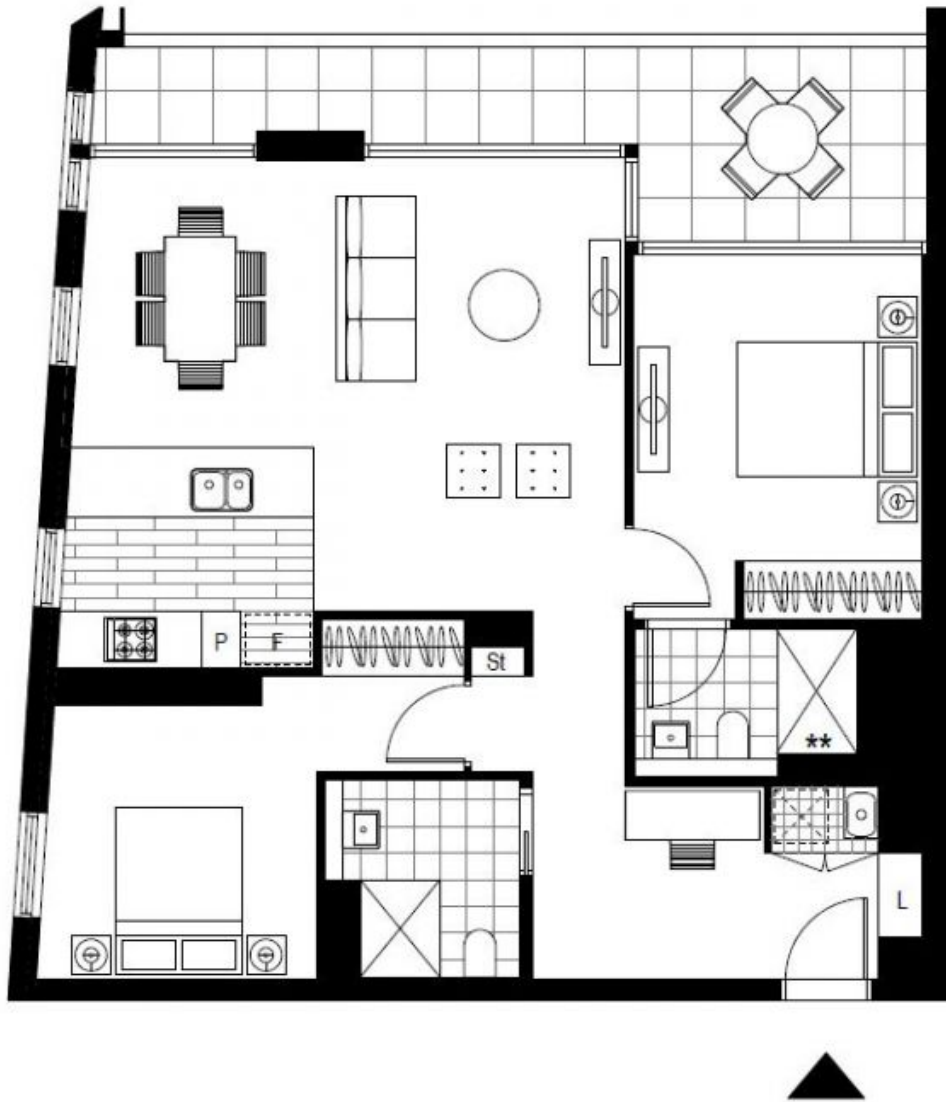
**Contact:** Christine Howison  
02 8588 8888  
0459 222 085

**Type:** Apartment

**Date Available:** 05/09/2020

**Bond:** \$2240

<https://www.resbymirvac.com>



Plans shown are only indicative of layout. Dimensions are approximate.

**SYDNEY OLYMPIC PARK, NSW**  
23106/2 Figtree Drive