

**SYDNEY OLYMPIC PARK, NSW**  
10803/2 Figtree Drive

**1** BED **1** BATH **1** CAR



**North Facing 1 Bedroom Plus Media Apartment**

This 59sqm, 1-Bedroom Plus Media Apartment features:

- Spacious bedroom with generous built-in wardrobe
- Open-plan living and dining area, leading to the balcony
- Contemporary kitchen with stone benchtop and Smeg appliances
- Sleek bathroom with generous vanity storage
- North-facing Sunny balcony, perfect for entertaining
- Internal laundry with dryer included
- Media area included, perfect for a home office
- Secure parking and Storage cage included
- Ducted A/C, video intercom and NBN connectivity
- Resident access to gym, community room and open BBQ area
- 550m to the Olympic Park Train Station, 650m to the Bicentennial Park, 700m to ANZ Stadium

**DEPOSIT TAKEN**

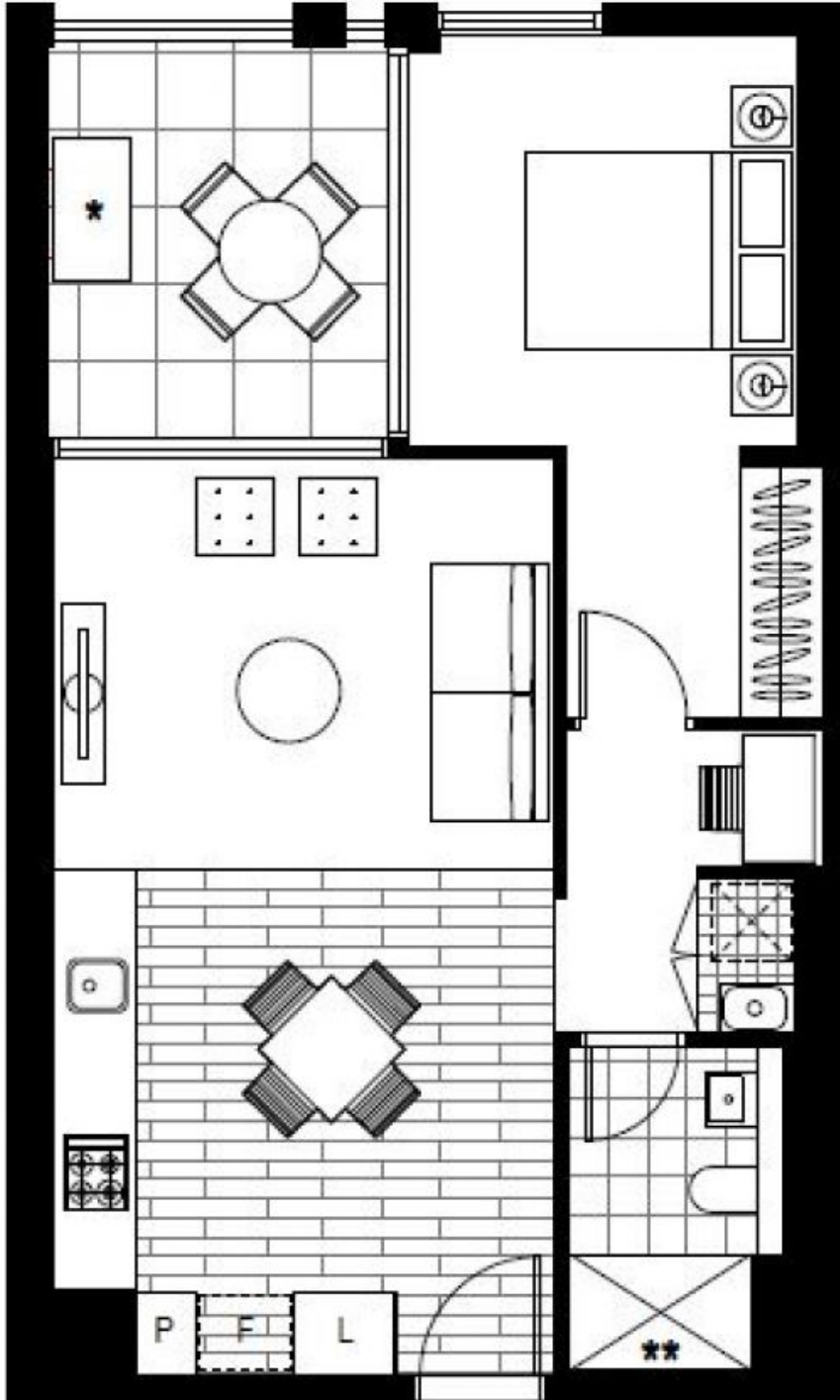
**Contact:** Christine Howison  
02 8588 8888  
0459 222 085  
Renee Chen  
02 8588 8888  
0422 567 670

**Type:** Apartment

**Date Available:** 17/08/2020

**Bond:** \$1800

<https://www.resbymirvac.com>



Plans shown are only indicative of layout. Dimensions are approximate.

**SYDNEY OLYMPIC PARK, NSW**  
10803/2 Figtree Drive