



**FOR & BETTER
SECTION OPTIONS**

are here to make the move to
home simple, safe and flexible.

Inspections
ours
Meetings

STER NOW
EASY STEPS

ook Inspection"
your details
pection method

**APPLY NOW
VIA FORM FOR
PRE-APPROVAL
ON ALL
PROPERTIES**

RES real estate
services
by mirvac



EAST MELBOURNE, VIC

1307/296 Victoria Parade

2
BED

2
BATH

1
CAR



The Eastbourne - 2-bedroom apartment with study

Eastbourne is set to be an inner-city Eden, a heartbeat from the city, yet feeling like a million miles away. Located in East Melbourne, a neighbourhood of distinction, steeped in history and home to a privileged few.

Apartment features:

- ? Bespoke design, quality construction and finishes
- ? Internal space of 110m²
- ? Large Balcony ? 10m²
- ? X1 Car spaces
- ? Storage cage near car space
- ? Luxurious ensuite with X2 basins
- ? Stainless steel Miele appliances, integrated dishwasher

\$900 per week

Contact: Baden Lucas
03 9645 1199
0418 888 751

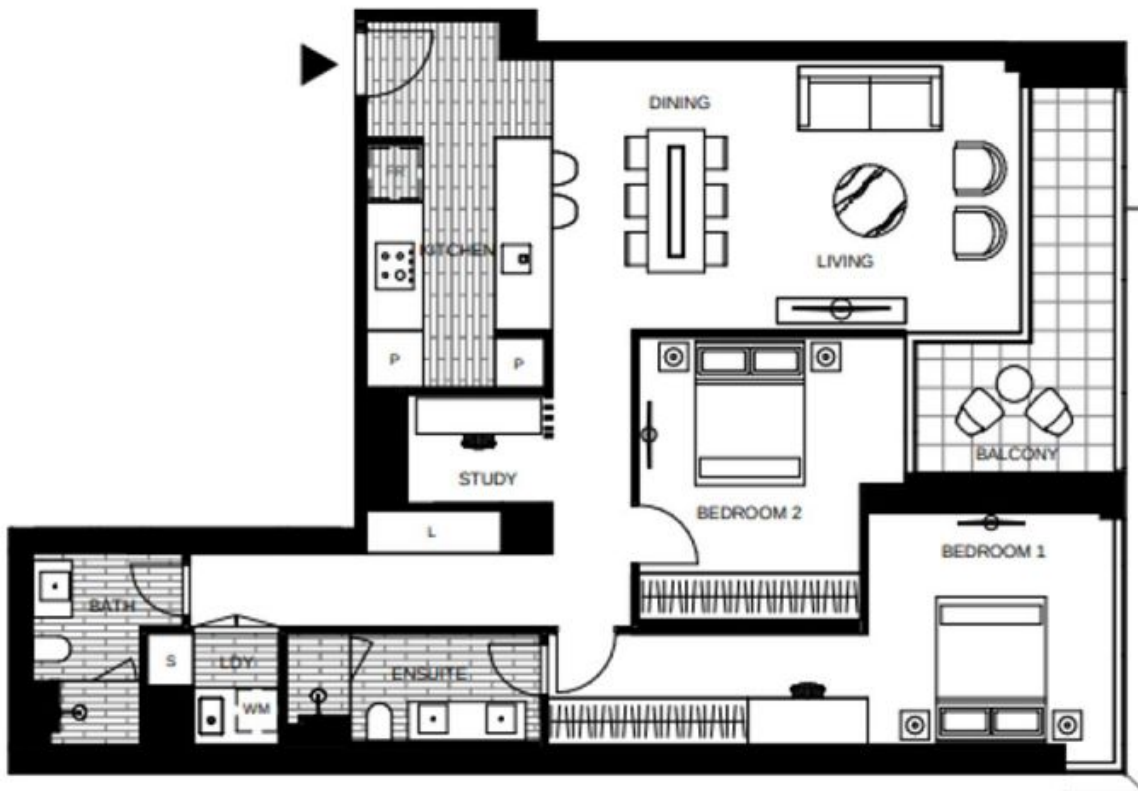
Type: Apartment

Date Available: 12/08/2020

Leased Date: 10/08/2020

Bond: \$5400

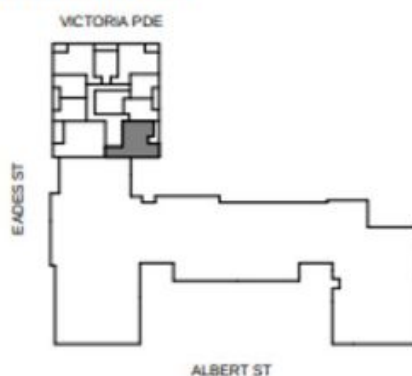
<https://www.resbymirvac.com>



LEVEL 7V,8V,9V,10V,11V,12V,13V,14V

APT 7-09V
APT 8-09V
APT 9-09V
APT 10-09V
APT 11-07V
APT 12-07V
APT 13-07V
APT 14-07V

LOCATION PLAN



APARTMENT 2 BED 2 BATH + STUDY

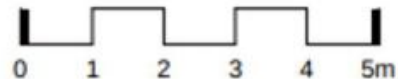


Internal Area 110m²

Balcony Area 10m²

Total Area 120m²

Areas subject to final survey, area includes balcony and/or terrace where applicable. It excludes parking and external storage areas.



Plans shown are only indicative of layout. Dimensions are approximate.

EAST MELBOURNE, VIC
1307/296 Victoria Parade