

SYDNEY OLYMPIC PARK, NSW
20909/2 Figtree Drive

2 BED **2** BATH **1** CAR



More apartments wanted - Call Christine on 0459 222 085 today!

This 95sqm, 2-Bedroom Apartment features:

- Spacious bedrooms with generous built-in wardrobes
- Open-plan living and dining area, leading to the balcony
- Contemporary kitchen with stone benchtops and Smeg appliances
- Sleek bathrooms with generous vanity storage
- North facing sunny balcony, perfect for entertaining
- Internal laundry with dryer included
- Secure car space and storage cage included
- Ducted A/C, video intercom and NBN connectivity
- Resident access to gym, community room and open BBQ area
- 550m to the Olympic Park Train Station, 650m to the Bicentennial Park, 700m to ANZ Stadium

Apartments Wanted!

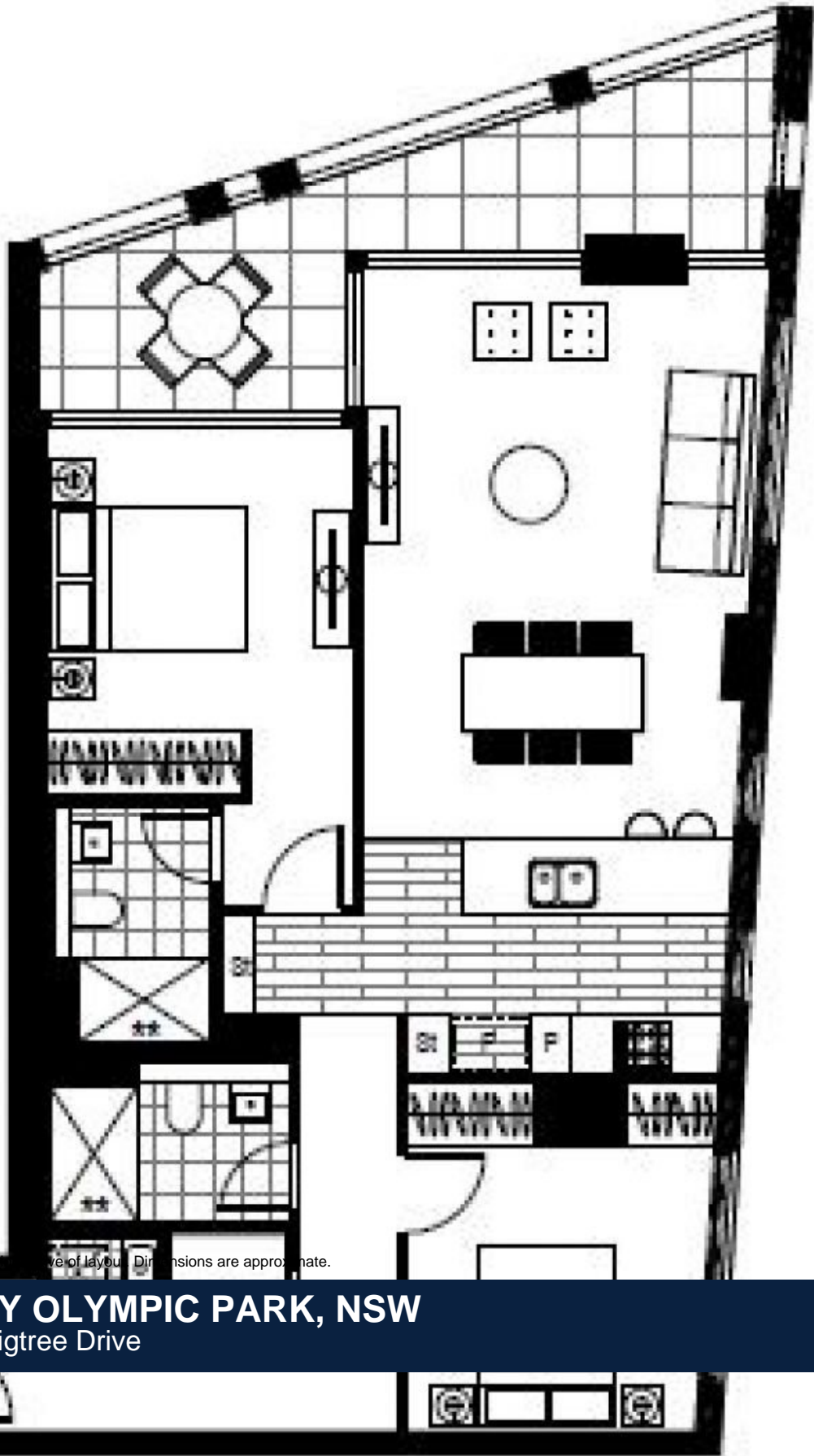
Contact: Christine Howison
02 8588 8888
0459 222 085

Type: Apartment

Date Available: 25/03/2021

Bond: \$2200

https://www.resbymirvac.com



Plans show approximate layout. Dimensions are approximate.

SYDNEY OLYMPIC PARK, NSW
20909/2 Figtree Drive