

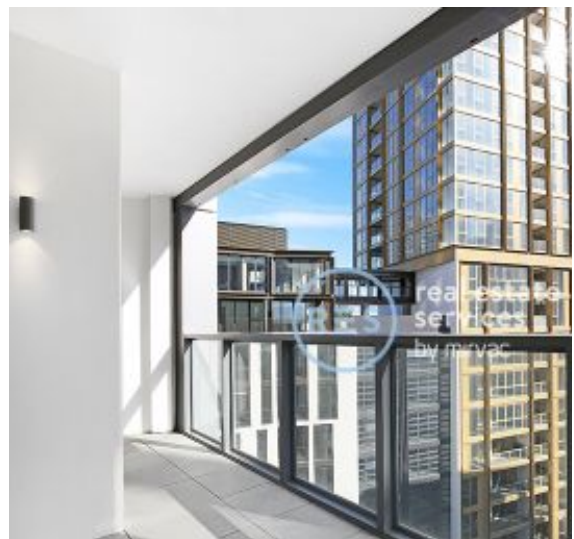
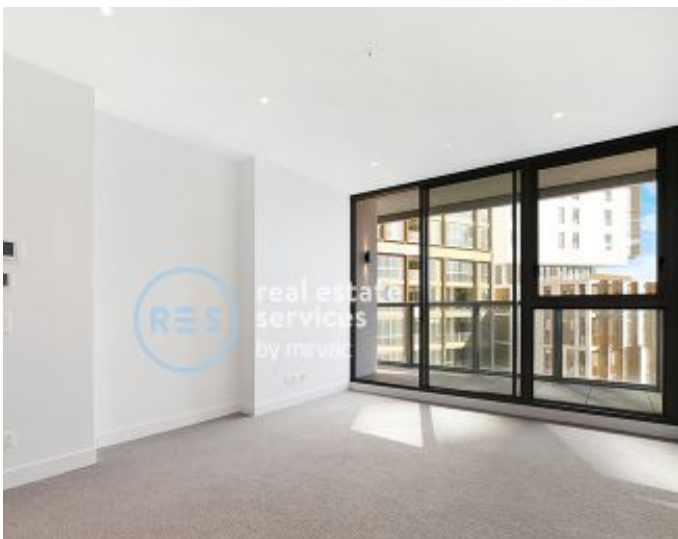
# New Selection of 2 Bedroom Apartments

## Rental from \$530pw – \$580pw

Call or text the rental hotline 0459 222 085 for your private tour or

**INSPECT SATURDAY 11.00am – 2.00pm**

Meet the leasing team at 2 Figtree Drive, Sydney Olympic Park



**SYDNEY OLYMPIC PARK, NSW**  
20803/2 Figtree Drive

**2**  
BED

**2**  
BATH

**1**  
CAR



### Premium Brand New North Facing 2 Bedroom Apartment in Scarlet

This 90sqm, 2-Bedroom Apartment features:

- Spacious bedrooms with generous built-in wardrobes
- Open-plan living and dining area, leading to the balcony
- Contemporary kitchen with stone benchtops and Smeg appliances
- Sleek bathrooms with generous vanity storage
- North facing sunny balcony, perfect for entertaining
- Internal laundry with dryer included
- Secure car space and storage cage included
- Ducted A/C, video intercom and NBN connectivity
- Resident access to gym, community room and open BBQ area
- 550m to the Olympic Park Train Station, 650m to the Bicentennial Park, 700m to ANZ Stadium

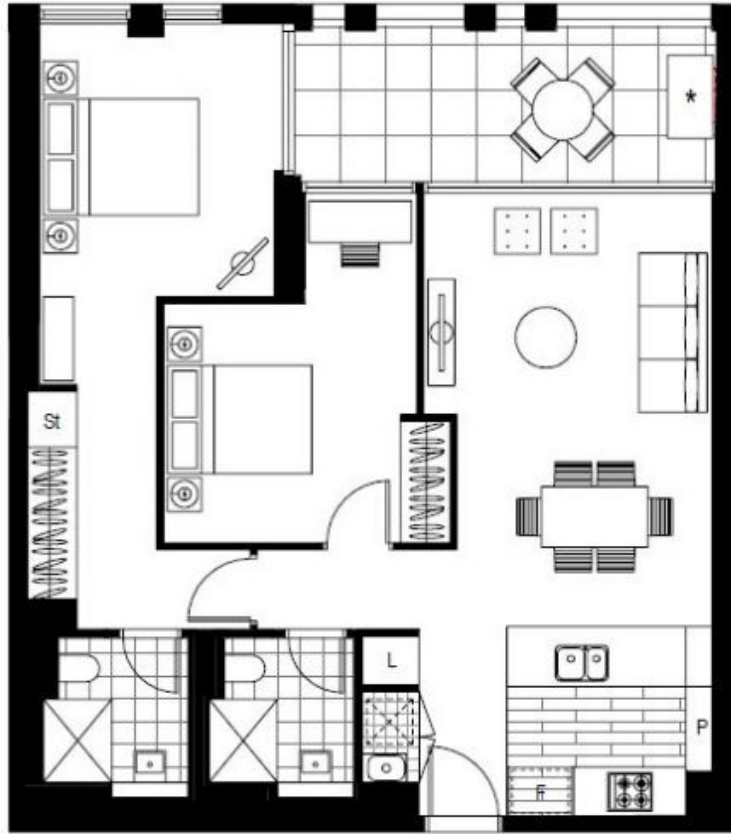
**\$560 per week**

**Contact:** Christine Howison  
02 8588 8888  
0459 222 085

**Type:** Apartment  
**Date Available:** 17/08/2020

**Bond:** \$2240

**<https://www.resbymirvac.com>**



Plans shown are only indicative of layout. Dimensions are approximate.

**SYDNEY OLYMPIC PARK, NSW**  
20803/2 Figtree Drive