

DEPOSIT TAKEN

More apartments available for lease

Please call 02 8588 8888 or
email enquiries@resbymirvac.com to book your inspection today

www.resbymirvac.com

PAVILIONS
RESIDENCES



SYDNEY OLYMPIC PARK, NSW 21308/2 Figtree Drive

1 1 1
BED BATH CAR



Brand New North West Facing 1 Bedroom + Media Apartment in Pavilions By Mirvac

This 61sqm, 1-Bedroom + Media Apartment features:

- Spacious bedroom with generous built-in wardrobe
- Open-plan living and dining area, leading to the balcony
- Contemporary kitchen with stone benchtop and Smeg appliances
- Sleek bathroom with bath tub and generous vanity storage
- North West facing sunny balcony, perfect for entertaining
- Internal laundry with dryer included
- Media area included, perfect for a home office
- Secure car parking & storage cage included
- Ducted A/C, video intercom and NBN connectivity
- Resident access to gym, community room and open BBQ area

More Apartments Available | Call to inspect!

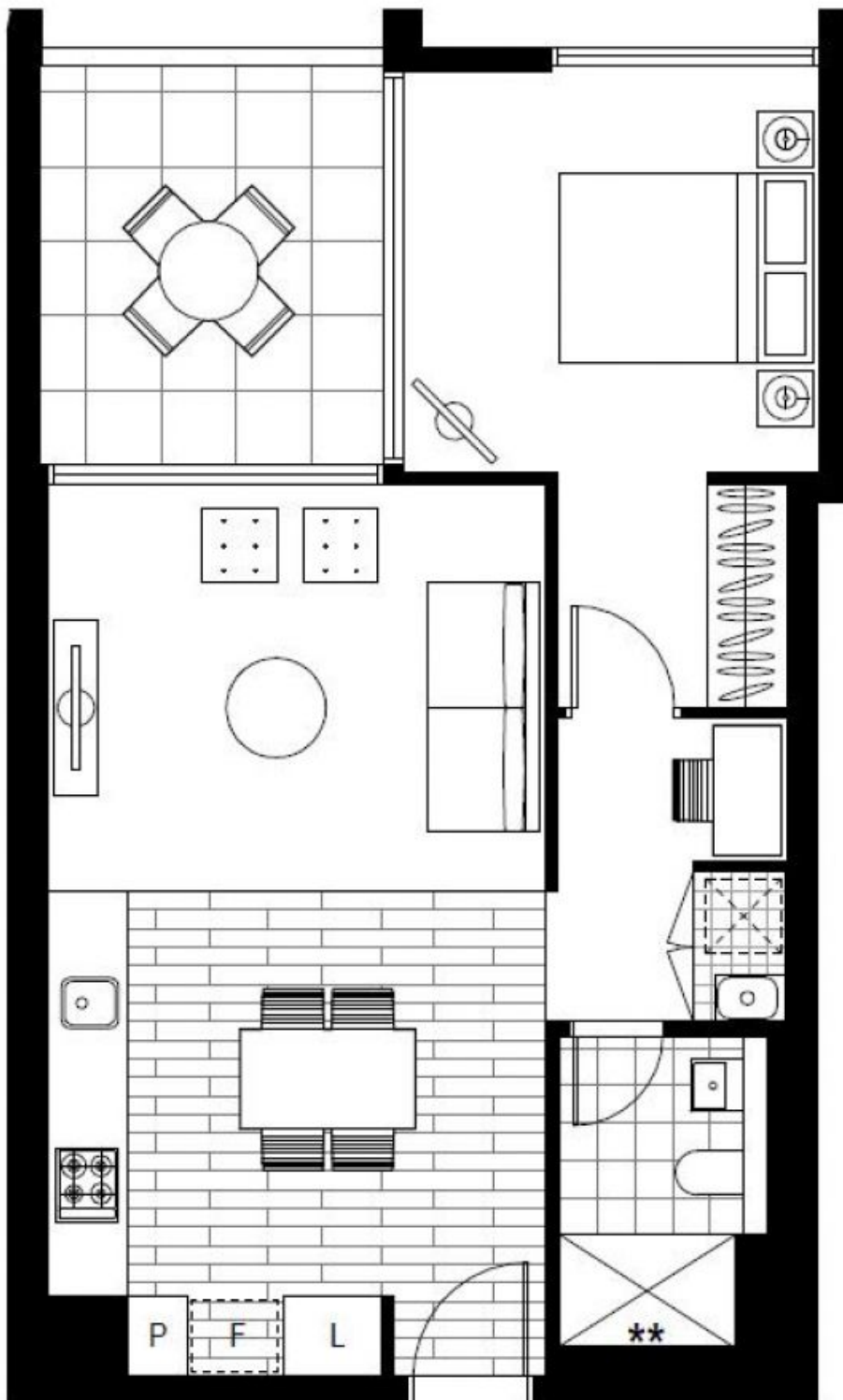
Contact: Christine Howison
02 8588 8888
0459 222 085

Type: Apartment

Date Available: 30/07/2020

Bond: \$1400

<https://www.resbymirvac.com>



Plans shown are only indicative of layout. Dimensions are approximate.

SYDNEY OLYMPIC PARK, NSW
21308/2 Figtree Drive