

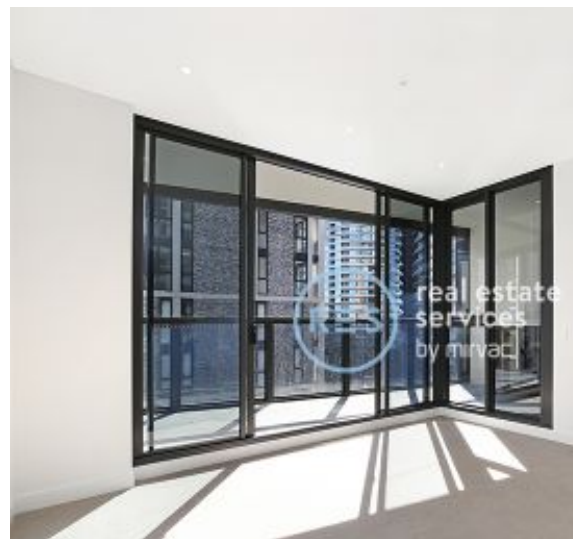
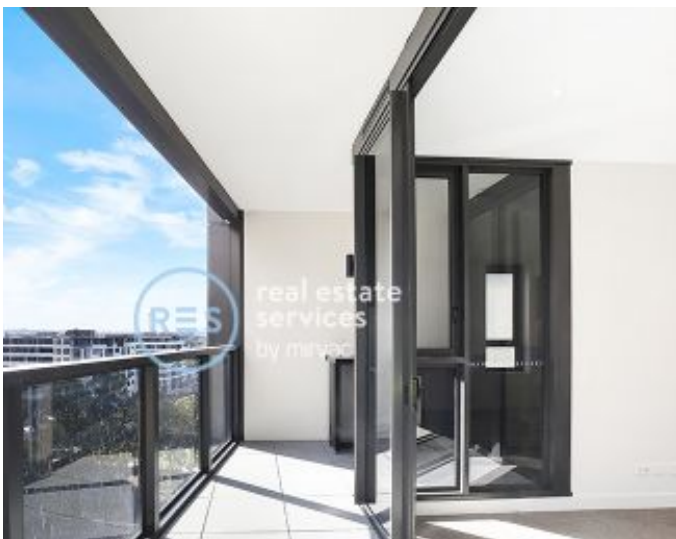
# DEPOSIT TAKEN

More apartments available for lease

Please call 02 8588 8888 or  
email [enquiries@resbymirvac.com](mailto:enquiries@resbymirvac.com) to book your inspection today

[www.resbymirvac.com](http://www.resbymirvac.com)

PAVILIONS  
RESIDENCES



## SYDNEY OLYMPIC PARK, NSW 20606/2 Figtree Drive

1 1 1  
BED BATH CAR



### Brand New North Facing 1 Bedroom + Study Apartment in Pavilions By Mirvac

This 73sqm, 1-Bedroom + Study Apartment features:

- Spacious bedroom with generous built-in wardrobes
- Open-plan living and dining area, leading to the balcony
- Contemporary kitchen with stone benchtops and Smeg appliances
- Sleek bathroom with generous vanity storage
- North facing sunny balcony, perfect for entertaining
- Internal laundry with dryer included
- Study area included, perfect for a home office
- Secure Parking and Storage cage included
- Ducted A/C, video intercom and NBN connectivity
- Resident access to gym, community room and open BBQ area

### More Apartments Available | Call to inspect!

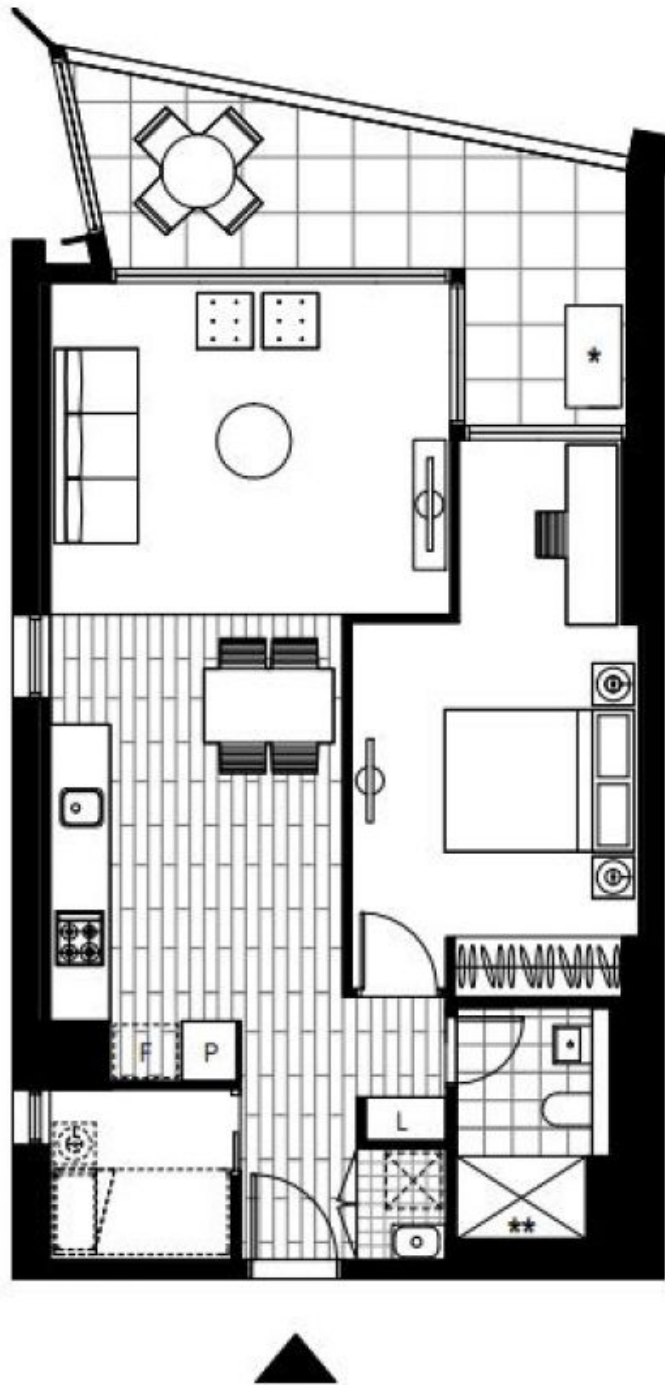
**Contact:** Christine Howison  
02 8588 8888  
0459 222 085

**Type:** Apartment

**Date Available:** 30/07/2020

**Bond:** \$1680

<https://www.resbymirvac.com>



Plans shown are only indicative of layout. Dimensions are approximate.

**SYDNEY OLYMPIC PARK, NSW**  
20606/2 Figtree Drive