



**SYDNEY OLYMPIC PARK, NSW**  
20308/2 Figtree Drive

**2** BED **2** BATH **1** CAR



**Brand New North Facing 2 Bedroom Apartment in Pavilions By Mirvac**

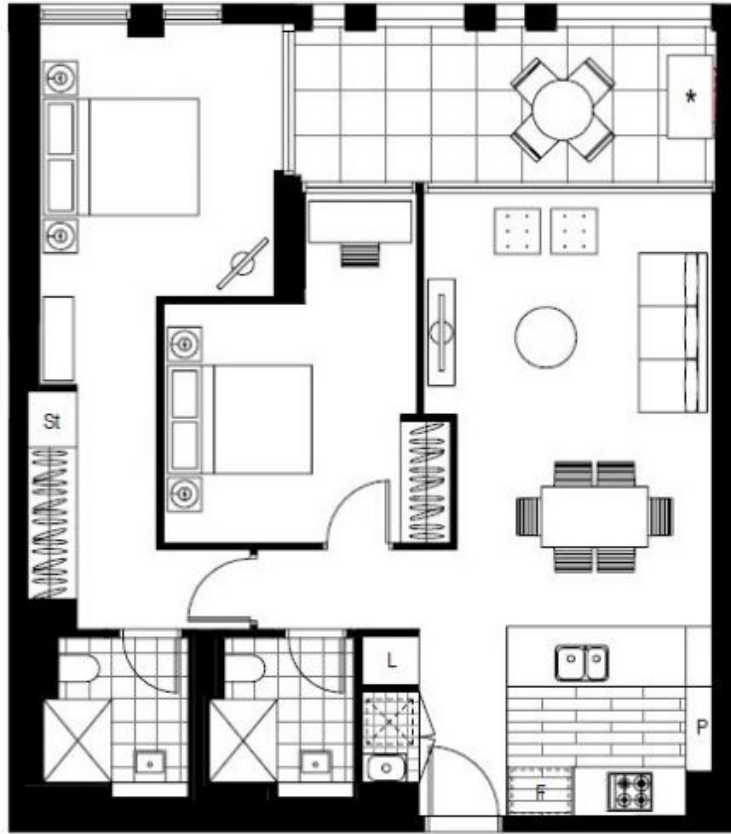
This 89sqm, 2-Bedroom Apartment features:

- Spacious bedrooms with generous built-in wardrobes
- Open-plan living and dining area, leading to the balcony
- Contemporary kitchen with stone benchtops and Smeg appliances
- Sleek bathrooms with generous vanity storage
- North facing sunny balcony, perfect for entertaining
- Internal laundry with dryer included
- Secure car space and storage cage included
- Ducted A/C, video intercom and NBN connectivity
- Resident access to gym, community room and open BBQ area
- 550m to the Olympic Park Train Station, 650m to the Bicentennial Park, 700m to ANZ Stadium

**DEPOSIT TAKEN**

**Contact:** Matthew Matthews  
02 8588 8888  
0418 266 590  
Christine Howison  
02 8588 8888  
0459 222 085

**Type:** Apartment  
**Date Available:** 17/08/2020  
**Bond:** \$2120  
**<https://www.resbymirvac.com>**



Plans shown are only indicative of layout. Dimensions are approximate.

**SYDNEY OLYMPIC PARK, NSW**  
20308/2 Figtree Drive