

DEPOSIT TAKEN

More apartments available for lease

Please call 02 8588 8888 or
email enquiries@resbymirvac.com to book your inspection today

www.resbymirvac.com

PAVILIONS
RESIDENCES



SYDNEY OLYMPIC PARK, NSW 21302/2 Figtree Drive

3 2 2 RES
BED BATH CAR

Brand New Corner position 3 Bedroom + Media Apartment in Pavilions By Mirvac

This 128sqm, 3-Bedroom + Media Apartment features:

- Spacious bedrooms with generous built-in wardrobes
- Open-plan living and dining area, leading to the balcony
- Contemporary kitchen with stone benchtops and Smeg appliances
- Sleek bathrooms with generous vanity storage, bath in ensuite
- Spacious balcony perfect for entertaining
- Internal laundry with dryer included
- Media area included, perfect for a home office
- Secure car space and storage cage included
- Ducted A/C, video intercom and NBN connectivity
- Resident access to gym, community room and open BBQ area

Deposit Taken - Others Available!

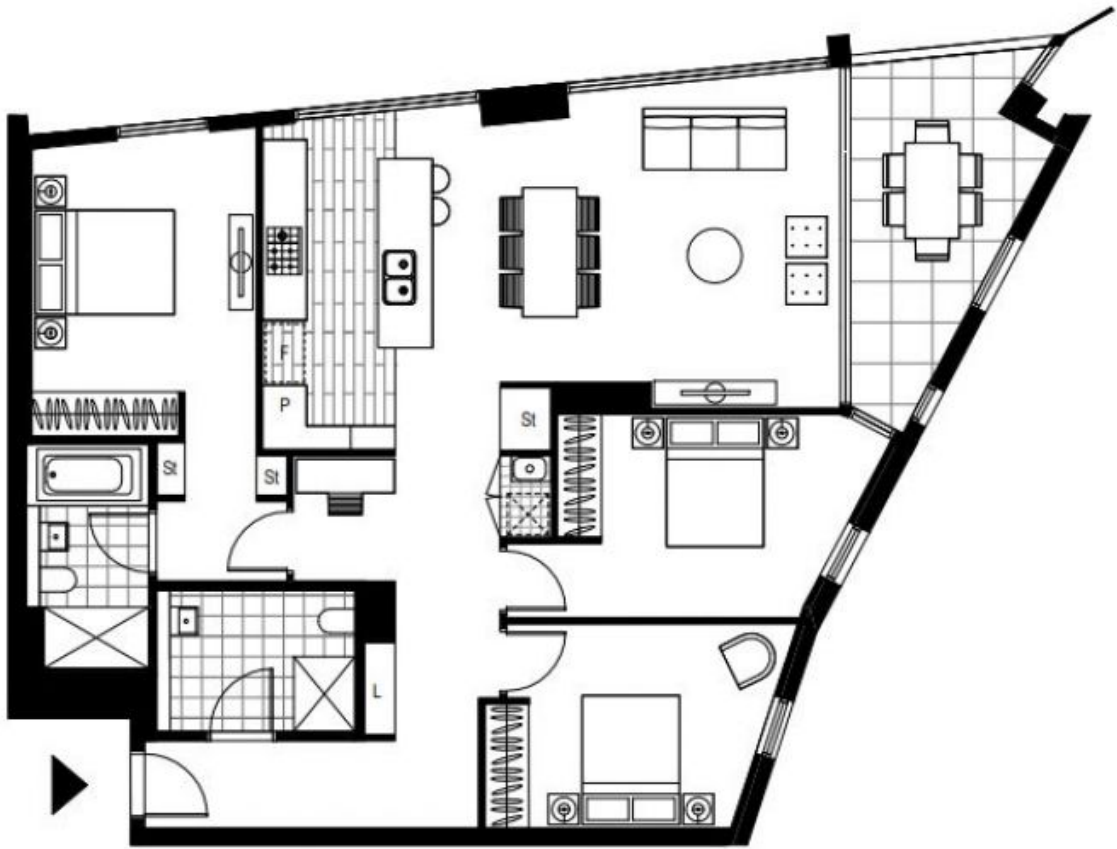
Contact: Christine Howison
02 8588 8888
0459 222 085

Type: Apartment

Date Available: 10/08/2020

Bond: \$3200

<https://www.resbymirvac.com>



Plans shown are only indicative of layout. Dimensions are approximate.

SYDNEY OLYMPIC PARK, NSW
21302/2 Figtree Drive